

DECR1 antibody [8B1AD10]

Cat. No. GTX54745

| | |
|---------------------|-------------------------------|
| Host | Mouse |
| Clonality | Monoclonal |
| Isotype | IgG1 |
| Applications | ICC/IF, IHC-P, IP, ELISA, IHC |
| Reactivity | Human |

Package
100 µg

Applications

Application Note

*Optimal dilutions/concentrations should be determined by the researcher.

| Suggested dilution | Recommended dilution |
|--------------------|----------------------|
| ICC/IF | 1.0 µg/ml |
| IHC-P | Assay dependent |
| IP | Assay dependent |
| ELISA | Assay dependent |
| IHC | Assay dependent |

Not tested in other applications.

Properties

| | |
|----------------------|---|
| Form | Liquid |
| Buffer | HEPES buffered saline |
| Preservative | 0.02% Sodium azide |
| Storage | Store as concentrated solution. Centrifuge briefly prior to opening vial. Store at 4°C. |
| Concentration | 1 mg/ml (Please refer to the vial label for the specific concentration.) |
| Immunogen | Human liver mitochondria |
| Purification | Purified IgG |
| Conjugation | Unconjugated |

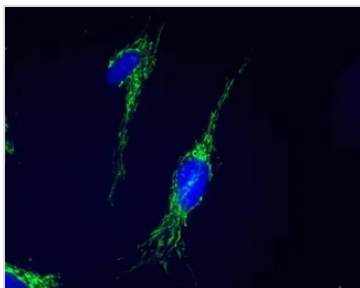
Note

For laboratory research use only. Not for any clinical, therapeutic, or diagnostic use in humans or animals. Not for animal or human consumption.

Purchasers shall not, and agree not to enable third parties to, analyze, copy, reverse engineer or otherwise attempt to determine the structure or sequence of the product.



For full product information, images and publications, please visit our [website](#).

DATA IMAGES

GTX54745 ICC/IF Image

ICC/IF analysis of HDFn cells using GTX54745 DECR1 antibody [8B1AD10].

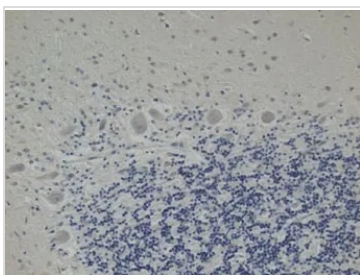
Green : Primary antibody

Blue : Nuclei

Fixation : 4% paraformaldehyde 20 mins

Permeabilization : Triton X-100 (0.1%, 15 min)

Dilution : 5 µg/ml overnight at 4°C


GTX54745 IHC-P Image

IHC-P analysis of aged human cerebellar tissue using GTX54745 DECR1 antibody [8B1AD10].



For full product information, images and publications, please visit our [website](https://www.genetex.com).