

## eIF1 antibody [2B9]

Cat. No. GTX54748

Host	Mouse
Clonality	Monoclonal
Isotype	IgG2a
Applications	WB, ICC/IF
Reactivity	Human, Mouse, Rat

References ( 1 )

Package

100 µg

## Applications

## Application Note

\*Optimal dilutions/concentrations should be determined by the researcher.

Suggested dilution	Recommended dilution
WB	1:500-1:2000
ICC/IF	1-2 µg/ml

Not tested in other applications.

Calculated MW 13 kDa. ( [Note](#) )

## Properties

Form	Liquid
Buffer	PBS, 0.1% BSA, 30% Glycerol
Preservative	0.05% Sodium azide
Storage	Store as concentrated solution. Centrifuge briefly prior to opening vial. For short-term storage (1-2 weeks), store at 4°C. For long-term storage, aliquot and store at -20°C or below. Avoid multiple freeze-thaw cycles.
Concentration	1 mg/ml (Please refer to the vial label for the specific concentration.)
Immunogen	Full length human EIF1 protein produced in HEK293T cells.
Purification	Protein A purified
Conjugation	Unconjugated

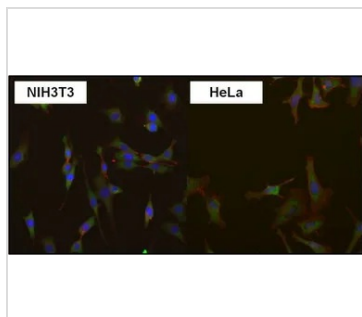
## Note

For laboratory research use only. Not for any clinical, therapeutic, or diagnostic use in humans or animals. Not for animal or human consumption.

Purchasers shall not, and agree not to enable third parties to, analyze, copy, reverse engineer or otherwise attempt to determine the structure or sequence of the product.



For full product information, images and publications, please visit our [website](#).

**DATA IMAGES**

**GTX54748 ICC/IF Image**

ICC/IF analysis of HeLa cells and NIH3T3 cells using GTX54748 eIF1 antibody [2B9].

Green : Primary antibody

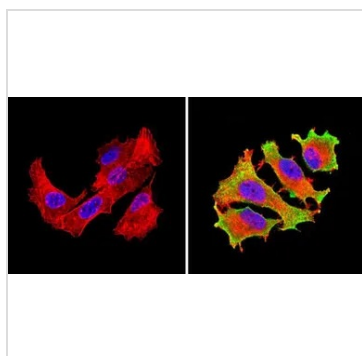
Blue : Nuclei

Red : Actin

Fixation : Formalin

Permeabilization : 0.1% Triton X-100 in TBS for 10 minutes

Dilution : 1:50 for at least 1 hour at room temperature


**GTX54748 ICC/IF Image**

ICC/IF analysis of MCF-7 cells using GTX54748 eIF1 antibody [2B9]. Cells were probed without (left) or with(right) an antibody.

Green : Primary antibody

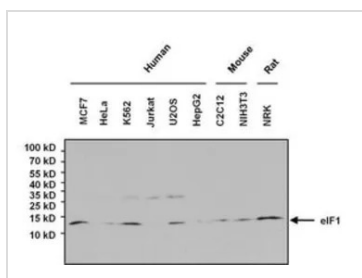
Blue : Nuclei

Red : Actin

Fixation : Formalin

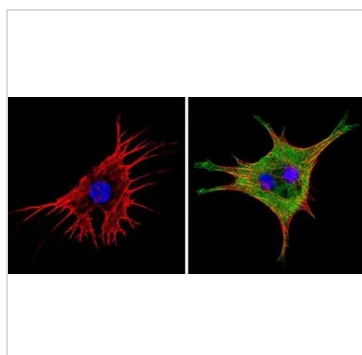
Permeabilization : 0.1% Triton X-100 in TBS for 5-10 minute

Dilution : 1:200 incubated overnight at 4 °C


**GTX54748 WB Image**

WB analysis of 80µg whole cell lysate using GTX54748 eIF1 antibody [2B9].

Dilution : 1:1000


**GTX54748 ICC/IF Image**

ICC/IF analysis of NIH-3T3 cells using GTX54748 eIF1 antibody [2B9]. Cells were probed without (left) or with(right) an antibody.

Green : Primary antibody

Blue : Nuclei

Red : Actin

Fixation : Formalin

Permeabilization : 0.1% Triton X-100 in TBS for 5-10 minute

Dilution : 1:200 incubated overnight at 4 °C



For full product information, images and publications, please visit our [website](https://www.genetex.com).