

CXCL11 antibody [10C6]

Cat. No. GTX54750

| | |
|---------------------|------------|
| Host | Mouse |
| Clonality | Monoclonal |
| Isotype | IgG1 |
| Applications | WB, ELISA |
| Reactivity | Human |

Package
200 µg

Applications

Application Note

*Optimal dilutions/concentrations should be determined by the researcher.

| Suggested dilution | Recommended dilution |
|--------------------|----------------------|
| WB | 1:1000 |
| ELISA | 1 - 3 µg/ml |

Not tested in other applications.

Calculated MW 10 kDa. ([Note](#))**Product Note** The Molecular weight is ~8303 Da from positions 22 - 94 as determined by MALDI.

Properties

| | |
|----------------------|--|
| Form | Liquid |
| Buffer | PBS |
| Preservative | No preservatives |
| Storage | Store as concentrated solution. Centrifuge briefly prior to opening vial. For short-term storage (1-2 weeks), store at 4°C. For long-term storage, aliquot and store at -20°C or below. Avoid multiple freeze-thaw cycles. |
| Concentration | Batch dependent (Please refer to the vial label for the specific concentration.) |
| Immunogen | Full length recombinant protein expressed in E-Coli |
| Purification | Protein G purified |
| Conjugation | Unconjugated |

Note

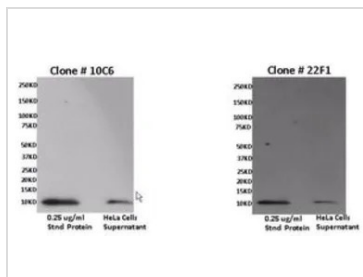
For laboratory research use only. Not for any clinical, therapeutic, or diagnostic use in humans or animals. Not for animal or human consumption.

Purchasers shall not, and agree not to enable third parties to, analyze, copy, reverse engineer or otherwise attempt to determine the structure or sequence of the product.



For full product information, images and publications, please visit our [website](#).

DATA IMAGES

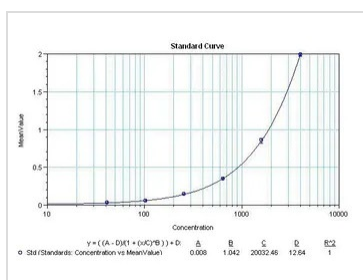


GTX54750 WB Image

WB analysis of recombinant human ITAC and induced HeLa cell culture supernatant using GTX54750 CXCL11 antibody [10C6] or GTX54751 CXCL11 antibody [22F1].

Dilution : 1:1000

*The competitor is not affiliated with GeneTex and does not endorse this product.



GTX54750 ELISA Image

Sandwich ELISA analysis of serial diluted human CXCL11 recombinant protein using CXCL11 antibody

Coating : GTX54750 CXCL11 antibody [10C6] in duplicate at 1, 3, 4, 5, 7, and 9 µg/ml

Detection : biotin conjugated GTX54751 CXCL11 antibody [22F1] (0.2 µg/ml)



For full product information, images and publications, please visit our [website](#).