

Cav2.3 antibody

Cat. No. GTX54756

Host	Rabbit
Clonality	Polyclonal
Isotype	IgG
Applications	WB, ICC/IF, IHC-Fr
Reactivity	Human, Mouse, Rat

References (1)

Package

50 µl

Applications

Application Note

*Optimal dilutions/concentrations should be determined by the researcher.

Suggested dilution	Recommended dilution
WB	Assay dependent
ICC/IF	Assay dependent
IHC-Fr	Assay dependent

Not tested in other applications.

Properties

Form	Liquid
Buffer	PBS, 1% BSA, 5% Sucrose
Preservative	0.025% Sodium azide
Storage	Store as concentrated solution. Centrifuge briefly prior to opening vial. For short-term storage (1-2 weeks), store at 4°C. For long-term storage, aliquot and store at -20°C or below. Avoid multiple freeze-thaw cycles.
Concentration	0.3 mg/ml (Please refer to the vial label for the specific concentration.)
Immunogen	Peptide (C)SASQERSLDEGVSIDG, corresponding to amino acid residues 892-907 (Intracellular loop between domains II and III) of rat Cav2.3 (Accession : Q07652).
Purification	Purified by antigen-affinity chromatography
Conjugation	Unconjugated

Note

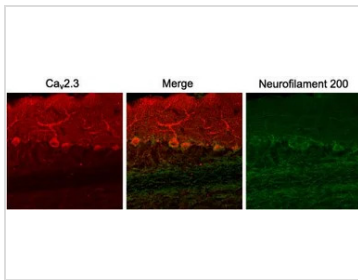
For laboratory research use only. Not for any clinical, therapeutic, or diagnostic use in humans or animals. Not for animal or human consumption.

Purchasers shall not, and agree not to enable third parties to, analyze, copy, reverse engineer or otherwise attempt to determine the structure or sequence of the product.



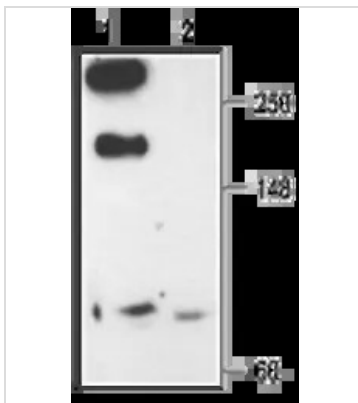
For full product information, images and publications, please visit our [website](#).

DATA IMAGES



GTX54756 IHC-Fr Image

IHC-Fr analysis of mouse cerebellum tissue using GTX54756 Cav2.3 antibody. Staining of neurofilament 200 (green) in the same brain section demonstrates the relationship between axons passing through the granule layer and the Purkinje cells.



GTX54756 WB Image

WB analysis of rat brain membrane lysate using GTX54756 Cav2.3 antibody preincubated with or without immunogen peptide.

Dilution : 1:200



For full product information, images and publications, please visit our [website](https://www.genetex.com).