

# TRPC4 antibody

**Cat. No. GTX54758**

<b>Host</b>	Rabbit
<b>Clonality</b>	Polyclonal
<b>Isotype</b>	IgG
<b>Applications</b>	WB, ICC/IF, IHC-P, IHC-Fr, IP
<b>Reactivity</b>	Human, Mouse, Rat

References ( 1 )

Package

50 µl

## Applications

### Application Note

\*Optimal dilutions/concentrations should be determined by the researcher.

Suggested dilution	Recommended dilution
WB	Assay dependent
ICC/IF	Assay dependent
IHC-P	Assay dependent
IHC-Fr	Assay dependent
IP	Assay dependent

Not tested in other applications.

**Calculated MW** 112 kDa. ( [Note](#) )

## Properties

<b>Form</b>	Liquid
<b>Buffer</b>	PBS, 1% BSA
<b>Preservative</b>	0.05% Sodium azide
<b>Storage</b>	Store as concentrated solution. Centrifuge briefly prior to opening vial. For short-term storage (1-2 weeks), store at 4°C. For long-term storage, aliquot and store at -20°C or below. Avoid multiple freeze-thaw cycles.
<b>Concentration</b>	0.4 mg/ml (Please refer to the vial label for the specific concentration.)
<b>Immunogen</b>	Peptide (C)KEKHAHEEDSSIDYDL, corresponding to amino acid residues 943-958 (Intracellular, C-terminus) of mouse TRPC4 (Accession Q9QUQ5).
<b>Purification</b>	Purified by antigen-affinity chromatography
<b>Conjugation</b>	Unconjugated



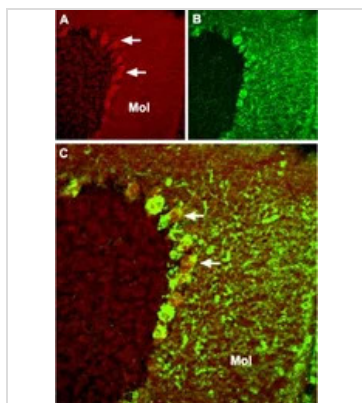
For full product information, images and publications, please visit our [website](#).

For laboratory research use only. Not for any clinical, therapeutic, or diagnostic use in humans or animals. Not for animal or human consumption.

## Note

Purchasers shall not, and agree not to enable third parties to, analyze, copy, reverse engineer or otherwise attempt to determine the structure or sequence of the product.

## DATA IMAGES



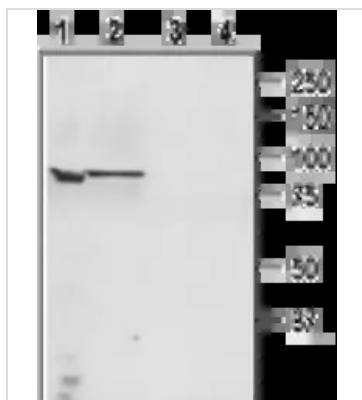
### GTx54758 IHC-Fr Image

IHC-Fr analysis of mouse cerebellum tissue using GTx54758 TRPC4 antibody.

Panel A : TRPC4 (red) appears in Purkinje cells (arrows) and in the molecular (Mol) layer.

Panel B : Staining with mouse anti-parvalbumin (PV) in the same brain section.

Panel C : Merge of TRPC4 and PV demonstrates partial co-localization in the Purkinje and the molecular layers.



### GTx54758 WB Image

WB analysis of PC3 (lanes 1,3) and LNCaP cell lysates using GTx54758 TRPC4 antibody preincubated with or without immunogen peptide.

Dilution : 1:200



### GTx54758 IP Image

IP analysis of rat brain tissue lysate using GTx54758 TRPC4 antibody. The upper arrow indicates TRPC4 channel while the lower arrow indicates the IgG heavy chain. WB was performed with the GTx54758 antibody.

IP reaction : 6  $\mu$ g

Lane 1 : Rat brain lysate

Lane 2 : Lysate immunoprecipitated with Anti-TRPC4 Antibody

Lane 3 : Lysate immunoprecipitated with pre-immune rabbit serum



For full product information, images and publications, please visit our [website](https://www.genetex.com).