

VR1/ TRPV1 antibody

Cat. No. GTX54762

Host	Rabbit
Clonality	Polyclonal
Isotype	IgG
Application	WB, ICC/IF, IHC-P, IHC-Fr, FACS
Reactivity	Human, Mouse, Rat

Reference (4)
Package
50 µl

APPLICATION

Application Note

*Optimal dilutions/concentrations should be determined by the researcher.

Suggested dilution	Recommended dilution
WB	Assay dependent
ICC/IF	Assay dependent
IHC-P	Assay dependent
IHC-Fr	Assay dependent
FACS	Assay dependent

Not tested in other applications.

Calculated MW 95 kDa. ([Note](#))

PROPERTIES

Form	Liquid
Buffer	PBS, 1% BSA
Preservative	0.05% Sodium azide
Storage	Store as concentrated solution. Centrifuge briefly prior to opening vial. For short-term storage (1-2 weeks), store at 4°C. For long-term storage, aliquot and store at -20°C or below. Avoid multiple freeze-thaw cycles.
Concentration	0.8 mg/ml (Please refer to the vial label for the specific concentration.)
Immunogen	Peptide (C)EDAEVFKDSMVPGEK, corresponding to amino acid residues 824-838 (Intracellular, C-terminus) of rat TRPV1 (Accession : O35433).
Purification	Purified by antigen-affinity chromatography
Conjugation	Unconjugated

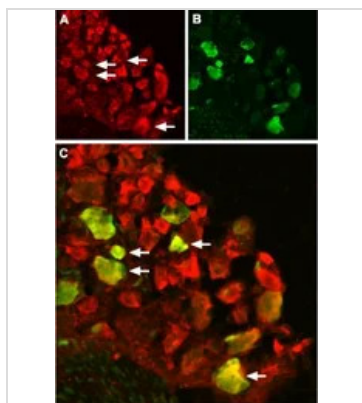


For full product information, images and publications, please visit our [website](#).

For laboratory research use only. Not for any clinical, therapeutic, or diagnostic use in humans or animals. Not for animal or human consumption.

Note

Purchasers shall not, and agree not to enable third parties to, analyze, copy, reverse engineer or otherwise attempt to determine the structure or sequence of the product.

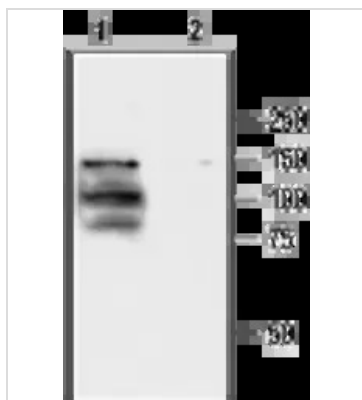
DATA IMAGES

GTX54762 IHC-Fr Image

IHC-Fr analysis of rat DRG tissue using GTX54762 VR1/ TRPV1 antibody.

Panel A : TRPV1 (red) in DRG neurons.

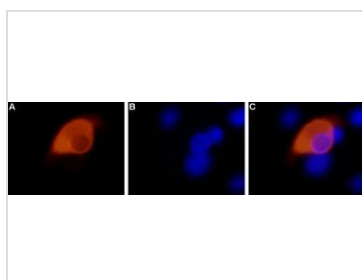
Panel B : Staining with mouse anti-Parvalbumin (green) in the same DRG section.

Panel C : Merge of TRPV1 and Parvalbumin demonstrates colocalization (arrows).


GTX54762 WB Image

WB analysis of TRPV1 transfected HEK-293 cell lysate using GTX54762 VR1/ TRPV1 antibody preincubated with or without immunogen peptide.

Dilution : 1:200


GTX54762 ICC/IF Image

ICC/IF analysis of PFA-fixed rat DRG primary culture cells using GTX54762 VR1/ TRPV1 antibody.

Panel A : Primary antibody

Panel B : DNA dye Hoechst 33342

Panel C : Merged images of panels A and B

Dilution : 1:200



For full product information, images and publications, please visit our [website](https://www.genetex.com).