

## TRPV3 antibody

**Cat. No. GTX54763**

<b>Host</b>	Rabbit
<b>Clonality</b>	Polyclonal
<b>Isotype</b>	IgG
<b>Applications</b>	WB, ICC/IF, IHC-Fr, LCI
<b>Reactivity</b>	Human, Mouse, Rat

**Package**  
50 µl

## Applications

**Application Note**

\*Optimal dilutions/concentrations should be determined by the researcher.

Suggested dilution	Recommended dilution
WB	Assay dependent
ICC/IF	Assay dependent
IHC-Fr	Assay dependent
LCI	Assay dependent

Not tested in other applications.

**Calculated MW** 91 kDa. ([Note](#))

## Properties

<b>Form</b>	Liquid
<b>Buffer</b>	PBS, 1% BSA
<b>Preservative</b>	0.05% Sodium azide
<b>Storage</b>	Store as concentrated solution. Centrifuge briefly prior to opening vial. For short-term storage (1-2 weeks), store at 4°C. For long-term storage, aliquot and store at -20°C or below. Avoid multiple freeze-thaw cycles.
<b>Concentration</b>	0.85 mg/ml (Please refer to the vial label for the specific concentration.)
<b>Immunogen</b>	Peptide (C)REEEAIPHPLALTHK, corresponding to amino acid residues 464-478 (1st extracellular loop) of human TRPV3 (Accession : Q8NET8).
<b>Purification</b>	Purified by antigen-affinity chromatography
<b>Conjugation</b>	Unconjugated



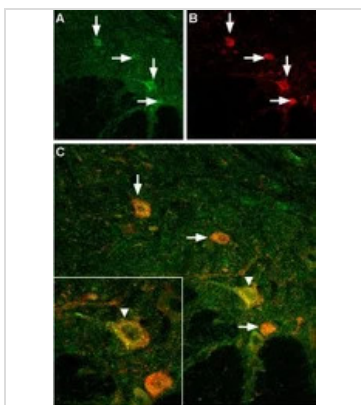
For full product information, images and publications, please visit our [website](#).

For laboratory research use only. Not for any clinical, therapeutic, or diagnostic use in humans or animals. Not for animal or human consumption.

#### Note

Purchasers shall not, and agree not to enable third parties to, analyze, copy, reverse engineer or otherwise attempt to determine the structure or sequence of the product.

#### DATA IMAGES



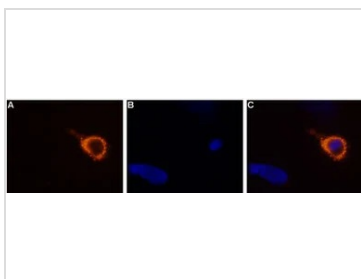
#### GTX54763 IHC-Fr Image

IHC-Fr analysis of mouse spinal cord tissue using GTX54763 TRPV3 antibody. The inset in panel C magnifies one large motor neuron (vertical arrowhead). Note the punctate pattern of TRPV3 on the surface of the soma.

Panel A : TRPV3 (green) appears in neurons (vertical arrows) in the ventral horn of the mouse spinal cord.

Panel B : Motor neurons were stained with goat anti-choline-acetyltransferase (red). In some motor neurons (A) TRPV3 was more intense (vertical arrow) whereas in others it was weak (horizontal arrows).

Panel C : Merged images of panels A and B.



#### GTX54763 LCI Image

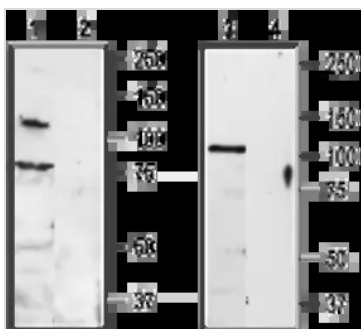
Live cell imaging analysis of living rat dorsal root ganglion (DRG) using GTX54763 TRPV3 antibody.

Panel A : Primary antibody (Orange)

Panel B : Hoechst 33342 for nuclear staining (blue)

Panel C : Merged images of Panel A and B

Dilution : 1:50-1:100



#### GTX54763 WB Image

WB analysis of rat DRG (lanes 1 and 2) and brain (lanes 3 and 4) lysates using GTX54763 TRPV3 antibody preincubated with or without immunogen peptide.

Dilution : 1:200



For full product information, images and publications, please visit our [website](#).