

## TRPA1 antibody

Cat. No. GTX54765

Host	Rabbit
Clonality	Polyclonal
Isotype	IgG
Application	WB, ICC/IF, IHC-P, IHC-Fr, IP, LCI
Reactivity	Human, Mouse, Rat

Reference ( 6 )

Package

50 µl

## APPLICATION

## Application Note

\*Optimal dilutions/concentrations should be determined by the researcher.

Suggested dilution	Recommended dilution
WB	Assay dependent
ICC/IF	Assay dependent
IHC-P	Assay dependent
IHC-Fr	Assay dependent
IP	Assay dependent
LCI	Assay dependent

Not tested in other applications.

Calculated MW 128 kDa. ( [Note](#) )

## PROPERTIES

Form	Liquid
Buffer	PBS, 1% BSA
Preservative	0.05% Sodium azide
Storage	Store as concentrated solution. Centrifuge briefly prior to opening vial. For short-term storage (1-2 weeks), store at 4°C. For long-term storage, aliquot and store at -20°C or below. Avoid multiple freeze-thaw cycles.
Concentration	1 mg/ml (Please refer to the vial label for the specific concentration.)
Immunogen	Peptide (C)NSTGIINETS DHSE, corresponding to amino acid residues 747-760 (1st extracellular loop) of human TRPA1 (Accession : O75762).
Purification	Purified by antigen-affinity chromatography
Conjugation	Unconjugated



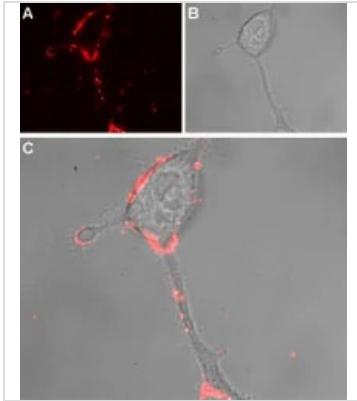
For full product information, images and publications, please visit our [website](#).

For laboratory research use only. Not for any clinical, therapeutic, or diagnostic use in humans or animals. Not for animal or human consumption.

## Note

Purchasers shall not, and agree not to enable third parties to, analyze, copy, reverse engineer or otherwise attempt to determine the structure or sequence of the product.

## DATA IMAGES



### GTX54765 LCI Image

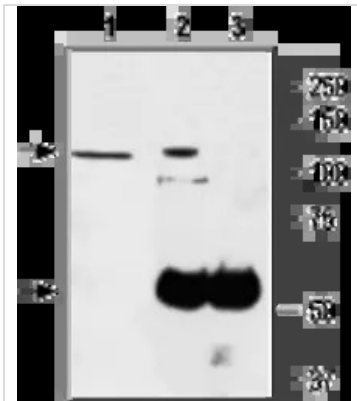
Live cell imaging analysis of intact living rat PC12 cells using GTX54765 TRPA1 antibody.

Panel A : Primary antibody (red)

Panel B : Live view of the cell

Panel C : Merged images of Panel A and B

Dilution : 1:50



### GTX54765 IP Image

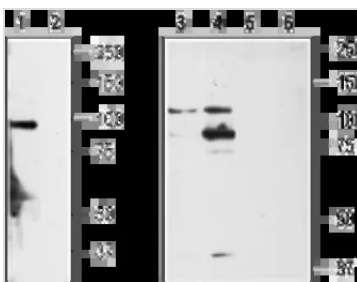
IP analysis of PC-12 cell lysate using GTX54765 TRPA1 antibody.

IP reaction : 6.5 µg antibody

Lane 1 : PC-12 lysates

Lane 2 : PC-12 lysates + Anti-TRPA1 Antibody + protein A beads

Lane 3 : Anti-TRPA1 Antibody + protein A beads



### GTX54765 WB Image

WB analysis of rat DRG (lanes 1,2), non-differentiated PC12 cells (lanes 3,5) and differentiated PC12 cells (lanes 4,6) lysates using GTX54765 TRPA1 antibody preincubated with or without immunogen peptide.

Dilution : 1:200



For full product information, images and publications, please visit our [website](https://www.genetex.com).