

VRL1 antibody

Cat. No. GTX54766

Host	Rabbit
Clonality	Polyclonal
Isotype	IgG
Applications	WB, ICC/IF, IHC-Fr, FCM, IP, LCI
Reactivity	Mouse, Rat

Package

50 µl

Applications

Application Note

*Optimal dilutions/concentrations should be determined by the researcher.

Suggested dilution	Recommended dilution
WB	Assay dependent
ICC/IF	Assay dependent
IHC-Fr	Assay dependent
FCM	Assay dependent
IP	Assay dependent
LCI	Assay dependent

Not tested in other applications.

Calculated MW 87 kDa. ([Note](#))

Properties

Form	Liquid
Buffer	PBS, 1% BSA
Preservative	0.05% Sodium azide
Storage	Store as concentrated solution. Centrifuge briefly prior to opening vial. For short-term storage (1-2 weeks), store at 4°C. For long-term storage, aliquot and store at -20°C or below. Avoid multiple freeze-thaw cycles.
Concentration	0.6 mg/ml (Please refer to the vial label for the specific concentration.)
Immunogen	Peptide (C)HQPSLDQPAIPSSKAT, corresponding to amino acid residues 413-428 (1st extracellular loop) of rat TRPV2 (Accession : Q9WUD2).
Purification	Purified by antigen-affinity chromatography
Conjugation	Unconjugated



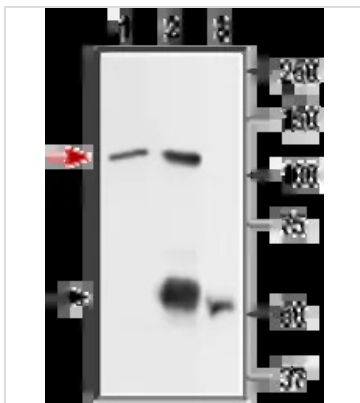
For full product information, images and publications, please visit our [website](#).

Date 2026 / 01 / 31 Page 1 of 2

For laboratory research use only. Not for any clinical, therapeutic, or diagnostic use in humans or animals. Not for animal or human consumption.

Note

Purchasers shall not, and agree not to enable third parties to, analyze, copy, reverse engineer or otherwise attempt to determine the structure or sequence of the product.

DATA IMAGES

GTX54766 IP Image

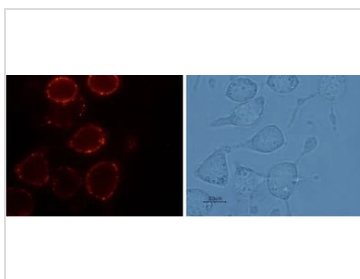
IP analysis of RBL cell lysate using GTX54766 VRL1 antibody. The upper arrow indicates TRPV2 while the lower arrow indicates the IgG heavy chain. WB was performed with the GTX54766 antibody.

IP reaction : 6 µg antibody

Lane 1 : RBL lysate.

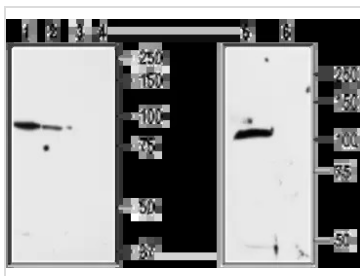
Lane 2 : Lysate immunoprecipitated with Anti-TRPV2 Antibody (6 µg).

Lane 3 : Lysate immunoprecipitated with pre-immune rabbit serum.


GTX54766 LCI Image

Live cell imaging analysis of intact living RBL cells using GTX54766 VRL1 antibody.

Dilution : 1:100


GTX54766 WB Image

WB analysis of ND7/23 cell membrane (lanes 1 and 3), RBL cells (lanes 2 and 4), and rat brain membrane (lanes 5 and 6) lysates using GTX54766 VRL1 antibody preincubated with or without immunogen peptide.

Dilution : 1:200



For full product information, images and publications, please visit our [website](https://www.genetex.com).