

# Cav alpha 2/delta 2 antibody

**Cat. No. GTX54770**

<b>Host</b>	Rabbit
<b>Clonality</b>	Polyclonal
<b>Isotype</b>	IgG
<b>Applications</b>	WB, IHC-Fr
<b>Reactivity</b>	Human, Mouse, Rat

**Package**  
50 µl

## Applications

### Application Note

\*Optimal dilutions/concentrations should be determined by the researcher.

Suggested dilution	Recommended dilution
WB	Assay dependent
IHC-Fr	Assay dependent

Not tested in other applications.

**Calculated MW** 131 kDa. ([Note](#))

## Properties

<b>Form</b>	Liquid
<b>Buffer</b>	PBS, 1% BSA
<b>Preservative</b>	0.05% Sodium azide
<b>Storage</b>	Store as concentrated solution. Centrifuge briefly prior to opening vial. For short-term storage (1-2 weeks), store at 4°C. For long-term storage, aliquot and store at -20°C or below. Avoid multiple freeze-thaw cycles.
<b>Concentration</b>	1 mg/ml (Please refer to the vial label for the specific concentration.)
<b>Immunogen</b>	(C)DLEAWAEKFKVLASNR, corresponding to amino acid residues 850-865 (Extracellular, N-terminus) of rat CaVα2δ2 (Accession : Q8CFG6).
<b>Purification</b>	Purified by antigen-affinity chromatography
<b>Conjugation</b>	Unconjugated

### Note

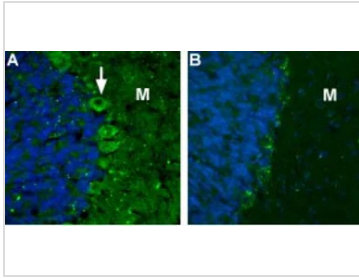
For laboratory research use only. Not for any clinical, therapeutic, or diagnostic use in humans or animals. Not for animal or human consumption.

Purchasers shall not, and agree not to enable third parties to, analyze, copy, reverse engineer or otherwise attempt to determine the structure or sequence of the product.



For full product information, images and publications, please visit our [website](#).

## DATA IMAGES

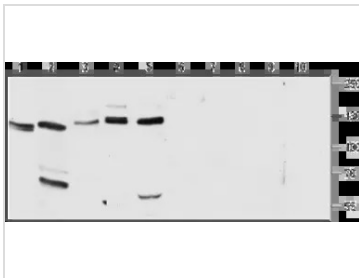


### GTx54770 IHC-Fr Image

IHC-Fr analysis of rat cerebellum tissue using GTx54770 Cav alpha 2/delta 2 antibody. DAPI is used as the counterstain (blue).

Panel A : CaVα2δ2 (green) appears in the soma of Purkinje cells (arrow) and in the molecular layer (M).

Panel B : Preincubation of the antibody with the control peptide antigen.



### GTx54770 WB Image

WB analysis of rat lung (lanes 1 and 6), rat brain (lanes 2 and 7), mouse brain (lanes 3 and 8), rat heart (lanes 4 and 9), and mouse heart (lanes 5 and 10) lysates using GTx54770 Cav alpha 2/delta 2 antibody preincubated with or without immunogen peptide.

Dilution : 1:200



For full product information, images and publications, please visit our [website](https://www.genetex.com).