

## KCNJ1 / ROMK antibody

Cat. No. GTX54775

<b>Host</b>	Rabbit
<b>Clonality</b>	Polyclonal
<b>Isotype</b>	IgG
<b>Applications</b>	WB, ICC/IF, IHC-Fr, IP
<b>Reactivity</b>	Human, Mouse, Rat

References ( 1 )

Package

50 µl

## Applications

## Application Note

\*Optimal dilutions/concentrations should be determined by the researcher.

Suggested dilution	Recommended dilution
WB	Assay dependent
ICC/IF	Assay dependent
IHC-Fr	Assay dependent
IP	Assay dependent

Not tested in other applications.

## Properties

<b>Form</b>	Liquid
<b>Buffer</b>	PBS, 1% BSA
<b>Preservative</b>	0.025% Sodium azide
<b>Storage</b>	Store as concentrated solution. Centrifuge briefly prior to opening vial. For short-term storage (1-2 weeks), store at 4°C. For long-term storage, aliquot and store at -20°C or below. Avoid multiple freeze-thaw cycles.
<b>Concentration</b>	0.8 mg/ml (Please refer to the vial label for the specific concentration.)
<b>Immunogen</b>	GST fusion protein with sequence HNFGKTEVETPHCAMCLYNEKDARARMKRGYDNPVFLSEVDET DDTQM, corresponding to amino acids 342-391 ( Intracellular, C-terminus) of rat KCNJ1 (Accession : P35560), (MW: 33 kDa).
<b>Purification</b>	Depleted of anti-GST antibodies by affinity chromatography on immobilized GST and purified by antigen-affinity chromatography. From serum
<b>Conjugation</b>	Unconjugated

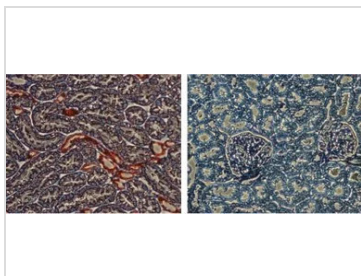


For full product information, images and publications, please visit our [website](#).

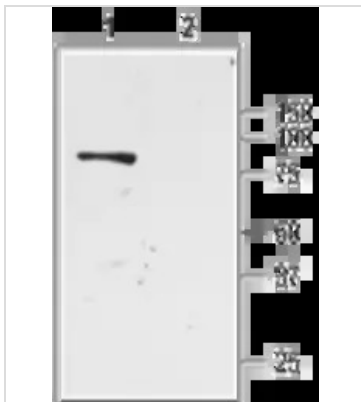
For laboratory research use only. Not for any clinical, therapeutic, or diagnostic use in humans or animals. Not for animal or human consumption.

**Note**

Purchasers shall not, and agree not to enable third parties to, analyze, copy, reverse engineer or otherwise attempt to determine the structure or sequence of the product.

**DATA IMAGES**

**GTX54775 IHC-Fr Image**

IHC-Fr analysis of rat kidney tissue using GTX54775 KCNJ1 / ROMK antibody. There is strong staining (red) of tubular epithelial cells in distal tubules. Note that no staining is observed in proximal tubules (arrow). Counterstain of cell nuclei appears blue. A negative control is shown (right).


**GTX54775 WB Image**

WB analysis of rat kidney membrane lysate using GTX54775 KCNJ1 / ROMK antibody preincubated with or without immunogen peptide.

Dilution : 1:200



For full product information, images and publications, please visit our [website](https://www.genetex.com).