

Kv11.1 antibody

Cat. No. GTX54776

Host	Rabbit
Clonality	Polyclonal
Isotype	IgG
Applications	WB, ICC/IF, IP, IHC
Reactivity	Human, Mouse, Rat

Package

50 µl

Applications

Application Note

*Optimal dilutions/concentrations should be determined by the researcher.

Suggested dilution	Recommended dilution
WB	Assay dependent
ICC/IF	Assay dependent
IP	Assay dependent
IHC	Assay dependent

Not tested in other applications.

Calculated MW 127 kDa. ([Note](#))

Properties

Form	Liquid
Buffer	PBS, 1% BSA
Preservative	0.025% Sodium azide
Storage	Store as concentrated solution. Centrifuge briefly prior to opening vial. For short-term storage (1-2 weeks), store at 4°C. For long-term storage, aliquot and store at -20°C or below. Avoid multiple freeze-thaw cycles.
Concentration	0.8 mg/ml (Please refer to the vial label for the specific concentration.)
Immunogen	Peptide (CY)EEL PAGAP EL PQD GPT, corresponding to residues 1122-1137 (Intracellular, C-terminal part) of rat Kv11.1 (erg1) (Accession : O08962).
Purification	Purified by antigen-affinity chromatography
Conjugation	Unconjugated



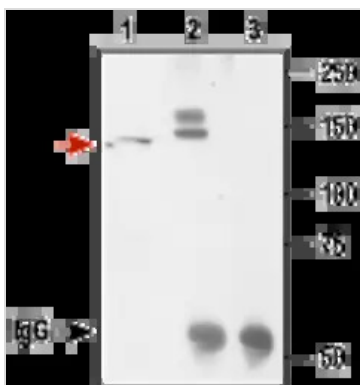
For full product information, images and publications, please visit our [website](#).

For laboratory research use only. Not for any clinical, therapeutic, or diagnostic use in humans or animals. Not for animal or human consumption.

Note

Purchasers shall not, and agree not to enable third parties to, analyze, copy, reverse engineer or otherwise attempt to determine the structure or sequence of the product.

DATA IMAGES



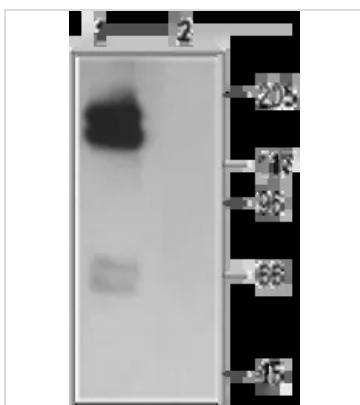
GTx54776 IP Image

IP analysis of HEK 293 cells stably expressing Kv11.1 lysate using GTx54776 Kv11.1 antibody. Red arrow indicates the Kv11.1 protein while the black arrow shows the IgG heavy chain.

Lane 1 : Cell lysate

Lane 2 : Cell lysate + protein A beads + Anti-Kv11.1 (erg1)

Lane 3 : Cell lysate + protein A beads + pre-immune rabbit serum.



GTx54776 WB Image

WB analysis of HEK 293 cell stably expressing HERG channel lysates using GTx54776 Kv11.1 antibody preincubated with or without immunogen peptide.

Dilution : 1:200



For full product information, images and publications, please visit our [website](https://www.genetex.com).