

Kv11.1 antibody

Cat. No. GTX54785

Host	Rabbit
Clonality	Polyclonal
Isotype	IgG
Applications	WB, ICC/IF, IP, IHC
Reactivity	Human, Mouse, Rat

Package

50 µl

Applications

Application Note

*Optimal dilutions/concentrations should be determined by the researcher.

Suggested dilution	Recommended dilution
WB	Assay dependent
ICC/IF	Assay dependent
IP	Assay dependent
IHC	Assay dependent

Not tested in other applications.

Calculated MW	127 kDa. (Note)
Product Note	The antibody recognizes the HERG1b splice variant but not splice variants HERG1-3 and HERG-4.

Properties

Form	Liquid
Buffer	PBS, 1% BSA
Preservative	0.025% Sodium azide
Storage	Store as concentrated solution. Centrifuge briefly prior to opening vial. For short-term storage (1-2 weeks), store at 4°C. For long-term storage, aliquot and store at -20°C or below. Avoid multiple freeze-thaw cycles.
Concentration	0.6 mg/ml (Please refer to the vial label for the specific concentration.)
Immunogen	GST fusion protein with sequence DSLSQVSQFMACEELPPGAPELPQEGPTRRLSLPGQLGALTSQPLHRHGSDPGS, corresponding to amino acid residues 1106-1159 (Intracellular, C-terminus) of human Kv11.1 (HERG) (Accession : Q12809), (MW: 35 kDa.).
Purification	Depleted of anti-GST antibodies by affinity chromatography on immobilized GST and purified by antigen-affinity chromatography. From serum
Conjugation	Unconjugated



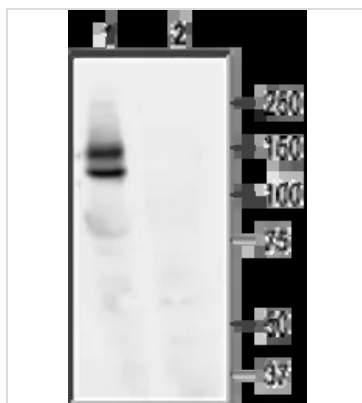
For full product information, images and publications, please visit our [website](#).

For laboratory research use only. Not for any clinical, therapeutic, or diagnostic use in humans or animals. Not for animal or human consumption.

Note

Purchasers shall not, and agree not to enable third parties to, analyze, copy, reverse engineer or otherwise attempt to determine the structure or sequence of the product.

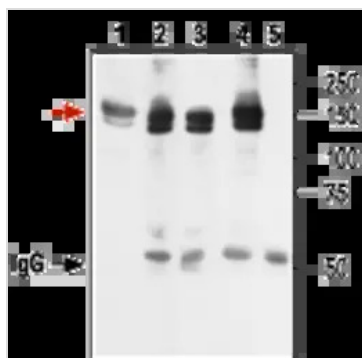
DATA IMAGES



GTX54785 WB Image

WB analysis of HEK-293 cell lysates using GTX54785 Kv11.1 antibody preincubated with or without immunogen peptide.

Dilution : 1:400



GTX54785 IP Image

IP analysis of HEK-293 cell lysate using GTX54785 Kv11.1 antibody. Red arrow indicates Kv11.1 while the black arrow shows the IgG heavy chain. WB was performed with the GTX54785 antibody.

Lane 1 : Cell lysate

Lane 2 : Lysate + protein A beads + Anti- Kv11.1 Antibody (GTX54785)

Lane 3 : Cell lysate + protein A beads + Anti-Kv11.1 Antibody (GTX54776)

Lane 4 : Cell lysate + protein A beads + Anti-Kv11.1 Antibody (GTX54789)

Lane 5 : Cell lysate + protein A beads + pre-immune rabbit serum



GTX54785 ICC/IF Image

ICC/IF analysis of HEK-293 transfected cells using GTX54785 Kv11.1 antibody. Arrows indicate cells that do not express the channel.



For full product information, images and publications, please visit our [website](https://www.genetex.com).