

Kv11.1 antibody

Cat. No. GTX54789

Host	Rabbit
Clonality	Polyclonal
Isotype	IgG
Applications	WB, ICC/IF, IHC-P, FCM, IP, LCI
Reactivity	Human, Rat

Package
50 µl

Applications

Application Note

*Optimal dilutions/concentrations should be determined by the researcher.

Suggested dilution	Recommended dilution
WB	Assay dependent
ICC/IF	Assay dependent
IHC-P	Assay dependent
FCM	Assay dependent
IP	Assay dependent
LCI	Assay dependent

Not tested in other applications.

Calculated MW 127 kDa. ([Note](#))

Properties

Form	Liquid
Buffer	PBS, 1% BSA
Preservative	0.05% Sodium azide
Storage	Store as concentrated solution. Centrifuge briefly prior to opening vial. For short-term storage (1-2 weeks), store at 4°C. For long-term storage, aliquot and store at -20°C or below. Avoid multiple freeze-thaw cycles.
Concentration	0.6 mg/ml (Please refer to the vial label for the specific concentration.)
Immunogen	Peptide AFLKETEEGPPATEC corresponding to residues 430-445 (Extracellular, between S1 and S2 domains) of human KV11.1 (HERG) (Accession : Q12809).
Purification	Purified by antigen-affinity chromatography
Conjugation	Unconjugated



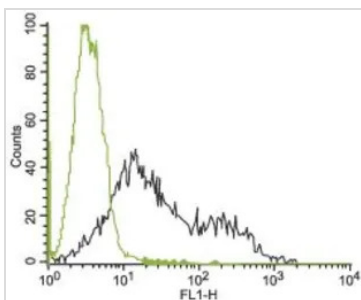
For full product information, images and publications, please visit our [website](#).

For laboratory research use only. Not for any clinical, therapeutic, or diagnostic use in humans or animals. Not for animal or human consumption.

Note

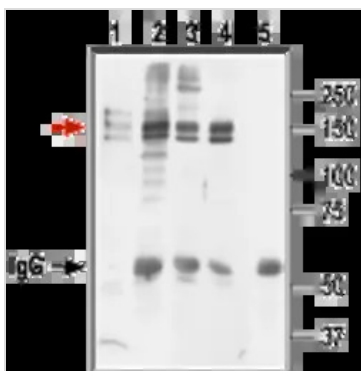
Purchasers shall not, and agree not to enable third parties to, analyze, copy, reverse engineer or otherwise attempt to determine the structure or sequence of the product.

DATA IMAGES



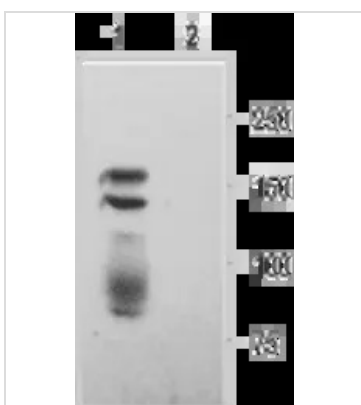
GTX54789 FCM Image

FACS analysis of K562 cells using GTX54789 Kv11.1 antibody.
 Green : Unstained cell
 Black : Cell staining with primary antibody



GTX54789 IP Image

IP analysis of HEK-293 cell lysate using GTX54789 Kv11.1 antibody. Red arrow indicates Kv11.1 while the black arrow shows the IgG heavy chain. WB was performed with the GTX54789 antibody.
 Lane 1 : Cell lysate
 Lane 2 : Lysate + protein A beads + Anti- Kv11.1 Antibody (GTX54785)
 Lane 3 : Cell lysate + protein A beads + Anti-Kv11.1 Antibody (GTX54776)
 Lane 4 : Cell lysate + protein A beads + Anti-Kv11.1 Antibody (GTX54789)
 Lane 5 : Cell lysate + protein A beads + pre-immune rabbit serum



GTX54789 WB Image

WB analysis of Kv11.1 transfected HEK-293 cell lysates using GTX54789 Kv11.1 antibody preincubated with or without immunogen peptide.
 Dilution : 1:200



For full product information, images and publications, please visit our [website](#).