

Kir5.1 antibody

Cat. No. GTX54791

Host	Rabbit
Clonality	Polyclonal
Isotype	IgG
Applications	WB, IHC-P
Reactivity	Human, Mouse, Rat

References (1)

Package

50 µl

Applications

Application Note

*Optimal dilutions/concentrations should be determined by the researcher.

Suggested dilution	Recommended dilution
WB	Assay dependent
IHC-P	Assay dependent

Not tested in other applications.

Properties

Form	Liquid
Buffer	PBS, 1% BSA
Preservative	0.025% Sodium azide
Storage	Store as concentrated solution. Centrifuge briefly prior to opening vial. For short-term storage (1-2 weeks), store at 4°C. For long-term storage, aliquot and store at -20°C or below. Avoid multiple freeze-thaw cycles.
Concentration	0.8 mg/ml (Please refer to the vial label for the specific concentration.)
Immunogen	Peptide HDVLEVKRKYYKVNC, corresponding to amino acid residues 311-325 (Intracellular, C-terminal) of rat KCNJ16 (Accession : P52191).
Purification	Purified by antigen-affinity chromatography
Conjugation	Unconjugated

Note

For laboratory research use only. Not for any clinical, therapeutic, or diagnostic use in humans or animals. Not for animal or human consumption.

Purchasers shall not, and agree not to enable third parties to, analyze, copy, reverse engineer or otherwise attempt to determine the structure or sequence of the product.



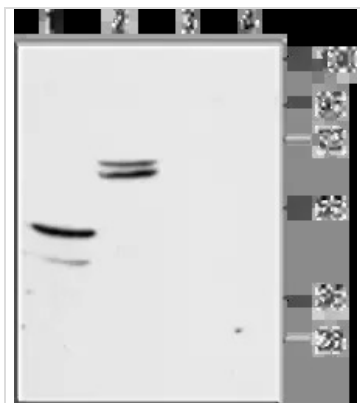
For full product information, images and publications, please visit our [website](#).

DATA IMAGES

GTX54791 WB Image

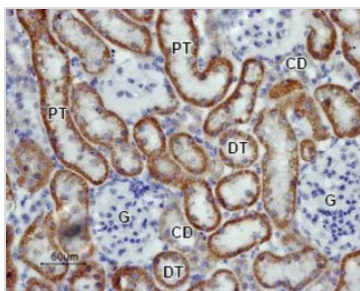
WB analysis of rat kidney (lanes 1 and 3) and liver (lanes 2 and 4) membrane lysates using GTX54791 Kir5.1 antibody preincubated with or without immunogen peptide.

Dilution : 1:200


GTX54791 WB Image

WB analysis of mouse brain (lanes 1 and 3) and kidney (lanes 2 and 4) membrane lysates using GTX54791 Kir5.1 antibody preincubated with or without immunogen peptide.

Dilution : 1:200


GTX54791 IHC-P Image

IHC-P analysis of rat kidney tissue using GTX54791 Kir5.1 antibody. Kir5.1 (brown staining) is expressed in both proximal tubules (PT) and distal tubules (DT) in the renal cortex. Note that collecting ducts (CD) are less stained while glomeruli (G) are negative. Hematoxylin is used as the counterstain.

Dilution : 1:100



For full product information, images and publications, please visit our [website](#).