

DPP6 antibody

Cat. No. GTX54792

Host	Rabbit
Clonality	Polyclonal
Isotype	IgG
Applications	WB, IHC-Fr, IHC (Free Floating)
Reactivity	Human, Mouse, Rat

Package

50 µl

Applications

Application Note

*Optimal dilutions/concentrations should be determined by the researcher.

Suggested dilution	Recommended dilution
WB	Assay dependent
IHC-Fr	Assay dependent
IHC (Free Floating)	Assay dependent

Not tested in other applications.

Calculated MW 98 kDa. ([Note](#))

Properties

Form	Liquid
Buffer	PBS, 1% BSA
Preservative	0.05% Sodium azide
Storage	Store as concentrated solution. Centrifuge briefly prior to opening vial. For short-term storage (1-2 weeks), store at 4°C. For long-term storage, aliquot and store at -20°C or below. Avoid multiple freeze-thaw cycles.
Concentration	0.8 mg/ml (Please refer to the vial label for the specific concentration.)
Immunogen	Peptide (C)KKHDESEAWLHR, corresponding to amino acid residues 414-426 (Extracellular, C-terminus) of human DPP6 (Accession : P42658).
Purification	Purified by antigen-affinity chromatography
Conjugation	Unconjugated

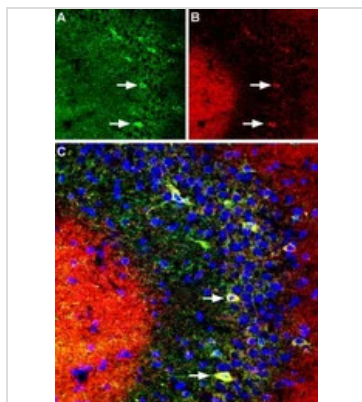
Note

For laboratory research use only. Not for any clinical, therapeutic, or diagnostic use in humans or animals. Not for animal or human consumption.

Purchasers shall not, and agree not to enable third parties to, analyze, copy, reverse engineer or otherwise attempt to determine the structure or sequence of the product.



For full product information, images and publications, please visit our [website](#).

DATA IMAGES

GTX54792 WB Image

IHC-Frfl (free floating) analysis of rat hippocampus tissue using GTX54792 DPP6 antibody. Cell nuclei are stained with DAPI (blue).

Panel A : DPP6 (green) is expressed in the CA3 rat hippocampal region.

Panel B : KV4.2 (red) is expressed in the same region.

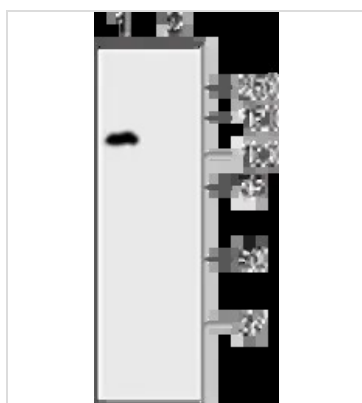
Panel C : Merge of the two images demonstrates partial colocalization in neurons of the CA3 region (arrows).

Dilution : 1:1000


GTX54792 IHC-Fr Image

WB analysis of mouse (lanes 1 and 3) and rat (lanes 2 and 4) brain lysates using GTX54792 DPP6 antibody preincubated with or without immunogen peptide.

Dilution : 1:200


GTX54792 WB Image

WB analysis of SH-SY5Y cell lysates using GTX54792 DPP6 antibody preincubated with or without immunogen peptide.

Dilution : 1:500



For full product information, images and publications, please visit our [website](http://www.genetex.com).