

KCNQ5 antibody

Cat. No. GTX54793

Host	Rabbit
Clonality	Polyclonal
Isotype	IgG
Applications	WB, ICC/IF, IHC-Fr, IHC (Free Floating)
Reactivity	Human, Mouse, Rat

Package

50 µl

Applications

Application Note

*Optimal dilutions/concentrations should be determined by the researcher.

Suggested dilution	Recommended dilution
WB	Assay dependent
ICC/IF	Assay dependent
IHC-Fr	Assay dependent
IHC (Free Floating)	Assay dependent

Not tested in other applications.

Calculated MW 102 kDa. ([Note](#))

Properties

Form	Liquid
Buffer	PBS, 1% BSA
Preservative	0.05% Sodium azide
Storage	Store as concentrated solution. Centrifuge briefly prior to opening vial. For short-term storage (1-2 weeks), store at 4°C. For long-term storage, aliquot and store at -20°C or below. Avoid multiple freeze-thaw cycles.
Concentration	0.8 mg/ml (Please refer to the vial label for the specific concentration.)
Immunogen	Peptide (C)RGSQDFYPKWRESK, corresponding to amino acid residues 856-869 (Intracellular, C-terminus) of mouse KCNQ5 (Accession : Q9JK45).
Purification	Purified by antigen-affinity chromatography
Conjugation	Unconjugated



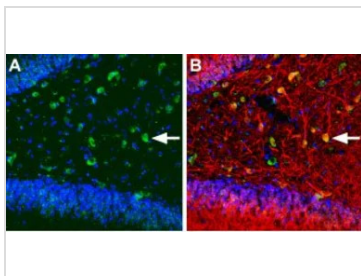
For full product information, images and publications, please visit our [website](#).

For laboratory research use only. Not for any clinical, therapeutic, or diagnostic use in humans or animals. Not for animal or human consumption.

Note

Purchasers shall not, and agree not to enable third parties to, analyze, copy, reverse engineer or otherwise attempt to determine the structure or sequence of the product.

DATA IMAGES



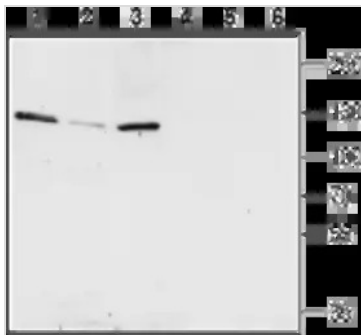
GTX54793 WB Image

IHC-Frfl (free floating) analysis of rat hippocampus tissue using GTX54793 KCNQ5 antibody.

Panel A : KCNQ5 (green) is expressed in hilar cells of the hippocampal dentate gyrus.

Panel B : Double-staining of KCNQ5 (green) with a neuronal marker (red) reveals partial localization with hilar interneurons (arrow points at an example).

Dilution : 1:100



GTX54793 IHC (Free Floating) Image

WB analysis of rat hippocampus (lanes 1 and 4), mouse brain (lanes 2 and 5) and rat brain (lanes 3 and 6) lysates using GTX54793 KCNQ5 antibody preincubated with or without immunogen peptide.

Dilution : 1:200



For full product information, images and publications, please visit our [website](#).