

# P2X7 antibody

**Cat. No. GTX54794**

<b>Host</b>	Rabbit
<b>Clonality</b>	Polyclonal
<b>Isotype</b>	IgG
<b>Applications</b>	WB, ICC/IF, IHC-P, FCM, IP
<b>Reactivity</b>	Human, Mouse, Rat

Package

50 µl

## Applications

### Application Note

\*Optimal dilutions/concentrations should be determined by the researcher.

Suggested dilution	Recommended dilution
WB	Assay dependent
ICC/IF	Assay dependent
IHC-P	Assay dependent
FCM	Assay dependent
IP	Assay dependent

Not tested in other applications.

**Calculated MW** 68 kDa. ( [Note](#) )

## Properties

<b>Form</b>	Liquid
<b>Buffer</b>	PBS, 1% BSA
<b>Preservative</b>	0.05% Sodium azide
<b>Storage</b>	Store as concentrated solution. Centrifuge briefly prior to opening vial. For short-term storage (1-2 weeks), store at 4°C. For long-term storage, aliquot and store at -20°C or below. Avoid multiple freeze-thaw cycles.
<b>Concentration</b>	0.6 mg/ml (Please refer to the vial label for the specific concentration.)
<b>Immunogen</b>	Peptide (C)KIRKEFPKTQGQYSGFKYPY, corresponding to amino acid residues 576-595 (Intracellular, C-terminus) of rat P2X7 receptor (Accession : Q64663).
<b>Purification</b>	Purified by antigen-affinity chromatography
<b>Conjugation</b>	Unconjugated



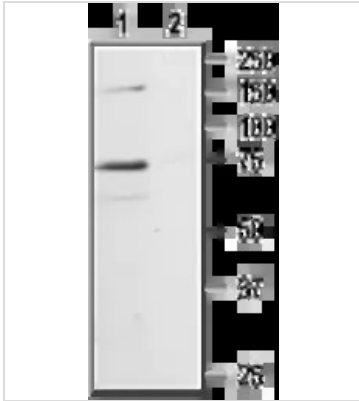
For full product information, images and publications, please visit our [website](#).

For laboratory research use only. Not for any clinical, therapeutic, or diagnostic use in humans or animals. Not for animal or human consumption.

## Note

Purchasers shall not, and agree not to enable third parties to, analyze, copy, reverse engineer or otherwise attempt to determine the structure or sequence of the product.

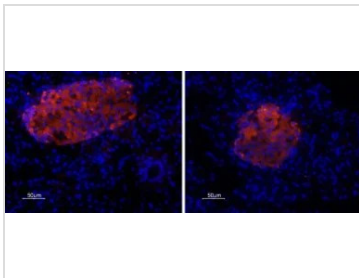
## DATA IMAGES



### GTX54794 WB Image

WB analysis of rat hippocampus lysates using GTX54794 P2X7 antibody preincubated with or without immunogen peptide.

Dilution : 1:200



### GTX54794 IHC-P Image

IHC-P analysis of rat pancreas tissue using GTX54794 P2X7 antibody. Staining is highly specific for endocrine cells of the Isle of Langerhans. Hoechst 33342 is used as the counterstain (blue).



For full product information, images and publications, please visit our [website](#).