

# P2Y12 antibody

**Cat. No. GTX54796**

<b>Host</b>	Rabbit
<b>Clonality</b>	Polyclonal
<b>Isotype</b>	IgG
<b>Applications</b>	WB, ICC/IF, IHC-Fr, FCM, IP
<b>Reactivity</b>	Human, Mouse, Rat

References ( 4 )

Package

50 µl

## Applications

### Application Note

\*Optimal dilutions/concentrations should be determined by the researcher.

Suggested dilution	Recommended dilution
WB	Assay dependent
ICC/IF	Assay dependent
IHC-Fr	Assay dependent
FCM	Assay dependent
IP	Assay dependent

Not tested in other applications.

**Calculated MW** 39 kDa. ( [Note](#) )

## Properties

<b>Form</b>	Liquid
<b>Buffer</b>	PBS, 1% BSA
<b>Preservative</b>	0.05% Sodium azide
<b>Storage</b>	Store as concentrated solution. Centrifuge briefly prior to opening vial. For short-term storage (1-2 weeks), store at 4°C. For long-term storage, aliquot and store at -20°C or below. Avoid multiple freeze-thaw cycles.
<b>Concentration</b>	0.8 mg/ml (Please refer to the vial label for the specific concentration.)
<b>Immunogen</b>	Peptide (C)KTTRPFKTSNPKNLLGAK, corresponding to amino acid residues 125-142 (Intracellular, 2nd cytoplasmic loop) of human P2RY12 (Accession : Q9H244).
<b>Purification</b>	Purified by antigen-affinity chromatography
<b>Conjugation</b>	Unconjugated



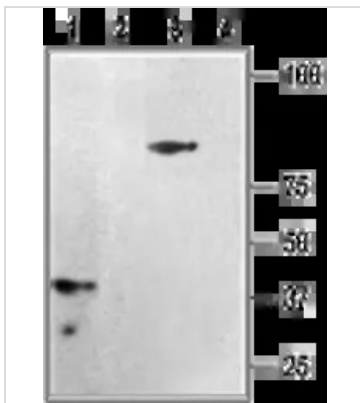
For full product information, images and publications, please visit our [website](#).

For laboratory research use only. Not for any clinical, therapeutic, or diagnostic use in humans or animals. Not for animal or human consumption.

## Note

Purchasers shall not, and agree not to enable third parties to, analyze, copy, reverse engineer or otherwise attempt to determine the structure or sequence of the product.

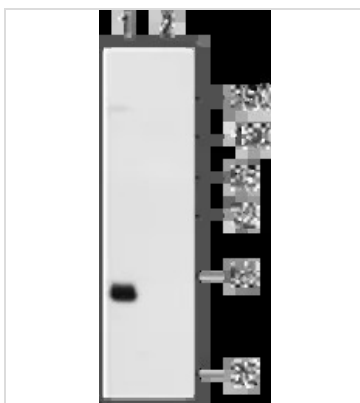
## DATA IMAGES



### GTx54796 WB Image

WB analysis of rat brain membrane (1, 2) and human platelets (3, 4) lysates using GTx54796 P2Y12 antibody preincubated with or without immunogen peptide.

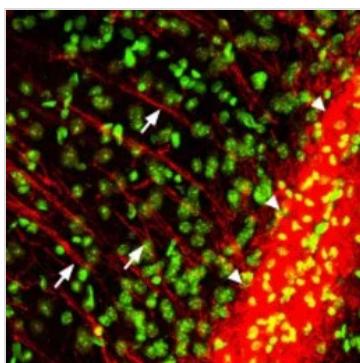
Dilution : 1:200



### GTx54796 WB Image

WB analysis of human platelet lysates using GTx54796 P2Y12 antibody preincubated with or without immunogen peptide.

Dilution : 1:200



### GTx54796 IHC-Fr Image

IHC-Fr analysis of mouse brain tissue using GTx54796 P2Y12 antibody. The region shown in this picture is the entorhinal cortex in mouse brain. The P2Y12 positive fibers (arrows) run from the corpus callosum (triangles) into the deep layers of the entorhinal cortex. Sytox green is used as the counterstain.



For full product information, images and publications, please visit our [website](https://www.genetex.com).