

# Nav1.2 antibody

**Cat. No. GTX54797**

<b>Host</b>	Rabbit
<b>Clonality</b>	Polyclonal
<b>Isotype</b>	IgG
<b>Applications</b>	WB, ICC/IF, IHC-Fr, IP
<b>Reactivity</b>	Human, Mouse, Rat

**Package**

50 µl

## Applications

### Application Note

\*Optimal dilutions/concentrations should be determined by the researcher.

Suggested dilution	Recommended dilution
WB	Assay dependent
ICC/IF	Assay dependent
IHC-Fr	Assay dependent
IP	Assay dependent

Not tested in other applications.

**Calculated MW** 228 kDa. ([Note](#))

## Properties

<b>Form</b>	Liquid
<b>Buffer</b>	PBS, 1% BSA
<b>Preservative</b>	0.05% Sodium azide
<b>Storage</b>	Store as concentrated solution. Centrifuge briefly prior to opening vial. For short-term storage (1-2 weeks), store at 4°C. For long-term storage, aliquot and store at -20°C or below. Avoid multiple freeze-thaw cycles.
<b>Concentration</b>	0.8 mg/ml (Please refer to the vial label for the specific concentration.)
<b>Immunogen</b>	Peptide (C)ASAESRDFSGAGGIGVFSE, corresponding to amino acid residues 467-485 (Intracellular loop between domains I and II) of rat Nav1.2 (Accession : P04775).
<b>Purification</b>	Purified by antigen-affinity chromatography
<b>Conjugation</b>	Unconjugated



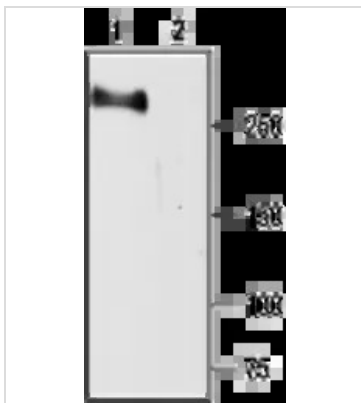
For full product information, images and publications, please visit our [website](#).

For laboratory research use only. Not for any clinical, therapeutic, or diagnostic use in humans or animals. Not for animal or human consumption.

## Note

Purchasers shall not, and agree not to enable third parties to, analyze, copy, reverse engineer or otherwise attempt to determine the structure or sequence of the product.

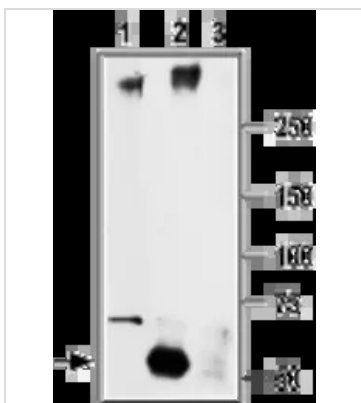
## DATA IMAGES



### GTX54797 WB Image

WB analysis of rat brain membrane lysate using GTX54797 Nav1.2 antibody preincubated with or without immunogen peptide.

Dilution : 1:200



### GTX54797 IP Image

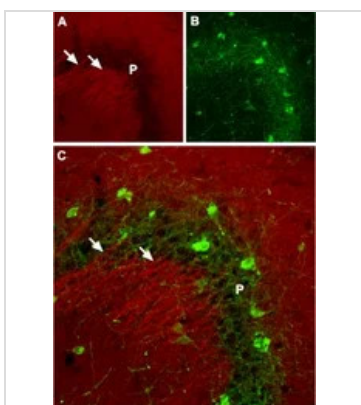
IP analysis of rat brain tissue lysate using GTX54797 Nav1.2 antibody. The lower arrow indicates the IgG heavy chain. WB was performed with the GTX54797 antibody.

IP reaction : 6  $\mu$ g

Lane 1 : Rat brain lysates

Lane 2 : Lysates immunoprecipitated with Anti-SCN2A (NaV1.2) Antibody

Lane 3 : Lysates immunoprecipitated with pre-immune rabbit serum



### GTX54797 IHC-Fr Image

IHC-Fr analysis of mouse hippocampus tissue using GTX54797 Nav1.2 antibody.

Panel A : NaV1.2 (red) is present in dendrites of pyramidal neurons in the CA3 region.

Panel B : Staining of interneurons in the pyramidal layer with mouse anti-Parvalbumin (green) demonstrates the restriction of NaV1.2 to dendrites (arrows) extending from the pyramidal layer (P).

Panel C : Confocal merge of panels A and B.



For full product information, images and publications, please visit our [website](https://www.genetex.com).