

Nav1.5 antibody

Cat. No. GTX54798

Host	Rabbit
Clonality	Polyclonal
Isotype	IgG
Applications	WB, ICC/IF, IHC-P, IHC-Fr, IP
Reactivity	Human, Mouse, Rat

References (1)

Package

50 µl

Applications

Application Note

*Optimal dilutions/concentrations should be determined by the researcher.

Suggested dilution	Recommended dilution
WB	Assay dependent
ICC/IF	Assay dependent
IHC-P	Assay dependent
IHC-Fr	Assay dependent
IP	Assay dependent

Not tested in other applications.

Calculated MW 227 kDa. ([Note](#))

Properties

Form	Liquid
Buffer	PBS, 1% BSA
Preservative	0.05% Sodium azide
Storage	Store as concentrated solution. Centrifuge briefly prior to opening vial. For short-term storage (1-2 weeks), store at 4°C. For long-term storage, aliquot and store at -20°C or below. Avoid multiple freeze-thaw cycles.
Concentration	0.8 mg/ml (Please refer to the vial label for the specific concentration.)
Immunogen	Peptide DRLPKSDSESGPRALNQLS(C), corresponding to amino acid residues 493-511 (Intracellular loop between domains I and II) of rat Nav1.5 (accession number P15389).
Purification	Purified by antigen-affinity chromatography
Conjugation	Unconjugated

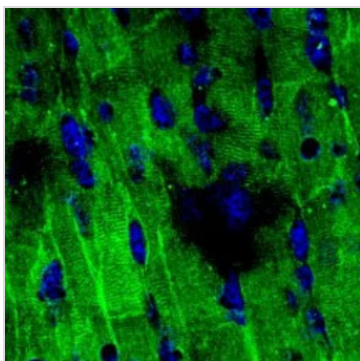


For full product information, images and publications, please visit our [website](#).

For laboratory research use only. Not for any clinical, therapeutic, or diagnostic use in humans or animals. Not for animal or human consumption.

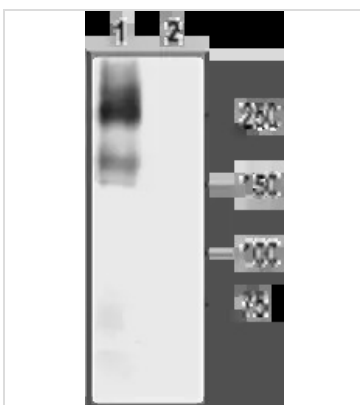
Note

Purchasers shall not, and agree not to enable third parties to, analyze, copy, reverse engineer or otherwise attempt to determine the structure or sequence of the product.

DATA IMAGES

GTx54798 IHC-Fr Image

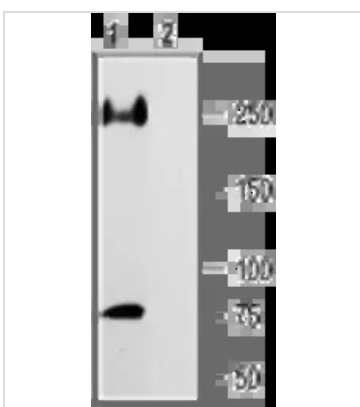
IHC-Fr analysis of mouse heart tissue using GTx54798 Nav1.5 antibody. Nav1.5 staining (green) is part of the striate morphology. Nuclei are stained with DAPI (blue).

Dilution : 1:200


GTx54798 WB Image

WB analysis of NaV1.5 transfected HEK-293 cell lysate using GTx54798 Nav1.5 antibody preincubated with or without immunogen peptide.

Dilution : 1:200


GTx54798 WB Image

WB analysis of rat heart membrane lysate using GTx54798 Nav1.5 antibody preincubated with or without immunogen peptide.

Dilution : 1:200



For full product information, images and publications, please visit our [website](#).