

# Nav beta 2 antibody

**Cat. No. GTX54799**

<b>Host</b>	Rabbit
<b>Clonality</b>	Polyclonal
<b>Isotype</b>	IgG
<b>Applications</b>	WB, IHC-Fr
<b>Reactivity</b>	Human, Mouse, Rat

**Package**  
50 µl

## Applications

### Application Note

\*Optimal dilutions/concentrations should be determined by the researcher.

Suggested dilution	Recommended dilution
WB	Assay dependent
IHC-Fr	Assay dependent

Not tested in other applications.

**Calculated MW** 24 kDa. ( [Note](#) )

## Properties

<b>Form</b>	Liquid
<b>Buffer</b>	PBS, 1% BSA
<b>Preservative</b>	0.05% Sodium azide
<b>Storage</b>	Store as concentrated solution. Centrifuge briefly prior to opening vial. For short-term storage (1-2 weeks), store at 4°C. For long-term storage, aliquot and store at -20°C or below. Avoid multiple freeze-thaw cycles.
<b>Concentration</b>	0.75 mg/ml (Please refer to the vial label for the specific concentration.)
<b>Immunogen</b>	Peptide (C)KTEEEGKTDGEGNAEDGAK, corresponding to amino acid residues 197-215 (Intracellular, C-terminus) of voltage-gated Na <sup>+</sup> channels (Accession : P54900).
<b>Purification</b>	Purified by antigen-affinity chromatography
<b>Conjugation</b>	Unconjugated

### Note

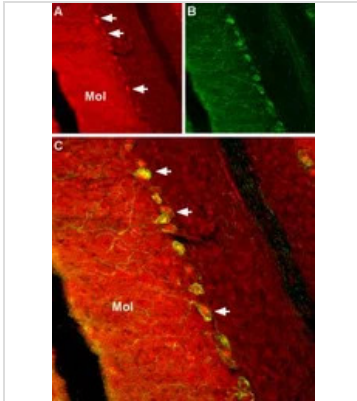
For laboratory research use only. Not for any clinical, therapeutic, or diagnostic use in humans or animals. Not for animal or human consumption.

Purchasers shall not, and agree not to enable third parties to, analyze, copy, reverse engineer or otherwise attempt to determine the structure or sequence of the product.



For full product information, images and publications, please visit our [website](#).

## DATA IMAGES



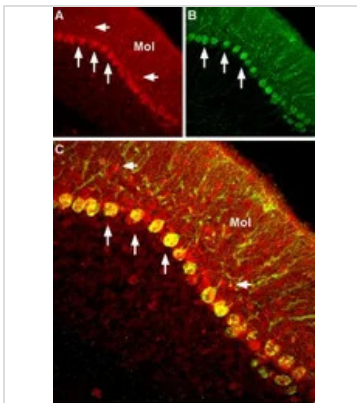
### GTX54799 IHC-Fr Image

IHC-Fr analysis of rat cerebellum tissue using GTX54799 Nav beta 2 antibody.

Panel A : NaVβ2 channel (red) appears in Purkinje cells (horizontal arrows) and is distributed diffusely in the molecular layer (Mol).

Panel B : Staining of Purkinje nerve cells with mouse anti-calcium binding protein (CBD28k, green) demonstrates the restriction of NaVβ2 to cell bodies.

Panel C : Merge of NaVβ2 and CBD28k.



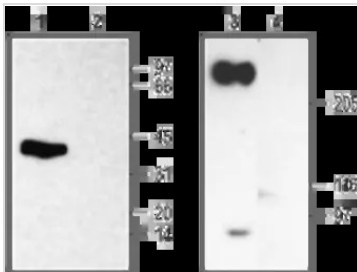
### GTX54799 IHC-Fr Image

IHC-Fr analysis of mouse cerebellum tissue using GTX54799 Nav beta 2 antibody.

Panel A : NaVβ2 channel (red) appears in Purkinje cells (vertical arrows) and in small cells in the molecular layer (horizontal arrows, Mol).

Panel B : Staining of Purkinje nerve cells with mouse anti-calcium binding protein (CBD28k, green) demonstrates the restriction of NaVβ2 to cell bodies.

Panel C : Merge of NaVβ2 and CBD28k.



### GTX54799 WB Image

WB analysis of rat brain membranes lysate under reducing (lanes 1 and 2) or non-reducing (lanes 3 and 4) conditions using GTX54799 Nav beta 2 antibody preincubated with or without immunogen peptide.

Dilution : 1:200



For full product information, images and publications, please visit our [website](https://www.genetex.com).