

Nav1.7 antibody

Cat. No. GTX54800

Host	Rabbit
Clonality	Polyclonal
Isotype	IgG
Applications	WB, ICC/IF, IHC-Fr
Reactivity	Human, Mouse, Rat

Package

50 µl

Applications

Application Note

*Optimal dilutions/concentrations should be determined by the researcher.

Suggested dilution	Recommended dilution
WB	Assay dependent
ICC/IF	Assay dependent
IHC-Fr	Assay dependent

Not tested in other applications.

Calculated MW 226 kDa. ([Note](#))

Properties

Form	Liquid
Buffer	PBS, 1% BSA
Preservative	0.05% Sodium azide
Storage	Store as concentrated solution. Centrifuge briefly prior to opening vial. For short-term storage (1-2 weeks), store at 4°C. For long-term storage, aliquot and store at -20°C or below. Avoid multiple freeze-thaw cycles.
Concentration	0.8 mg/ml (Please refer to the vial label for the specific concentration.)
Immunogen	Peptide (C)EFTSIGRSR IIMGLSE, corresponding to amino acid residues 446-460 (Intracellular loop between domains I and II) of rat Nav1.7 (Accession : O08562).
Purification	Purified by antigen-affinity chromatography
Conjugation	Unconjugated

Note

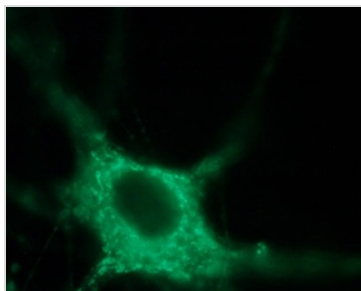
For laboratory research use only. Not for any clinical, therapeutic, or diagnostic use in humans or animals. Not for animal or human consumption.

Purchasers shall not, and agree not to enable third parties to, analyze, copy, reverse engineer or otherwise attempt to determine the structure or sequence of the product.



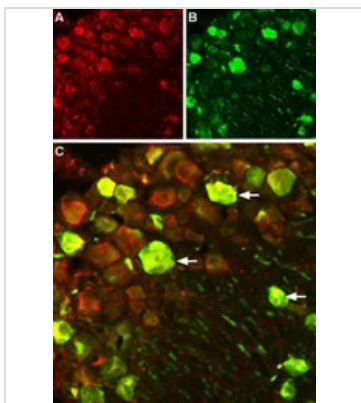
For full product information, images and publications, please visit our [website](#).

DATA IMAGES



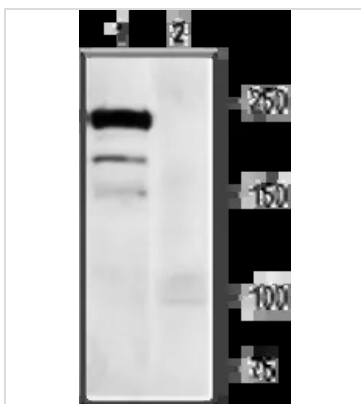
GTX54800 ICC/IF Image

ICC/IF analysis of PFA-fixed rat DRG primary cells using GTX54800 Nav1.7 antibody.
Dilution : 1:200



GTX54800 IHC-Fr Image

IHC-Fr analysis of rat DRG tissue using GTX54800 Nav1.7 antibody.
Panel A : NaV1.7 channel (red) in DRG neurons.
Panel B : Staining with mouse anti-Parvalbumin (green) in the same DRG section.
Panel C : Merge of NaV1.7 and Parvalbumin demonstrates colocalization (arrows).



GTX54800 WB Image

WB analysis of DRG lysates using GTX54800 Nav1.7 antibody preincubated with or without immunogen peptide.
Dilution : 1:200



For full product information, images and publications, please visit our [website](https://www.genetex.com).