

# Nav1.5 antibody

**Cat. No. GTX54803**

<b>Host</b>	Rabbit
<b>Clonality</b>	Polyclonal
<b>Isotype</b>	IgG
<b>Applications</b>	WB, ICC/IF, IHC-P, FCM
<b>Reactivity</b>	Human, Rat

**Package**

50 µl

## Applications

### Application Note

\*Optimal dilutions/concentrations should be determined by the researcher.

Suggested dilution	Recommended dilution
WB	Assay dependent
ICC/IF	Assay dependent
IHC-P	Assay dependent
FCM	Assay dependent

Not tested in other applications.

**Calculated MW** 227 kDa. ([Note](#))

## Properties

<b>Form</b>	Liquid
<b>Buffer</b>	PBS, 1% BSA
<b>Preservative</b>	0.05% Sodium azide
<b>Storage</b>	Store as concentrated solution. Centrifuge briefly prior to opening vial. For short-term storage (1-2 weeks), store at 4°C. For long-term storage, aliquot and store at -20°C or below. Avoid multiple freeze-thaw cycles.
<b>Concentration</b>	0.95 mg/ml (Please refer to the vial label for the specific concentration.)
<b>Immunogen</b>	GST fusion protein with amino acid residues 1978-2016 (Intracellular, C-terminus) of human Nav1.5 (Accession Q14524), (MW: 33 kDa.).
<b>Purification</b>	Depleted of anti-GST antibodies by affinity chromatography on immobilized GST and purified by antigen-affinity chromatography. From serum
<b>Conjugation</b>	Unconjugated

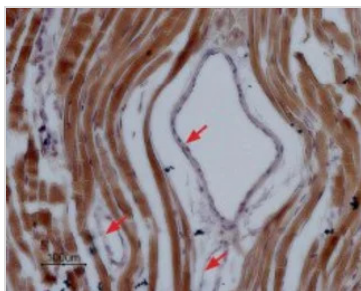


For full product information, images and publications, please visit our [website](#).

For laboratory research use only. Not for any clinical, therapeutic, or diagnostic use in humans or animals. Not for animal or human consumption.

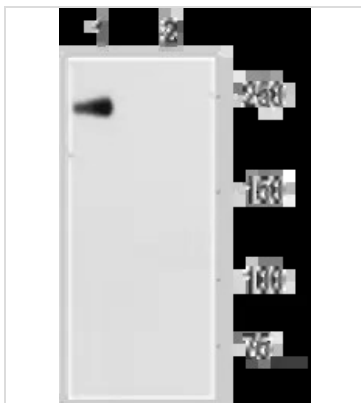
**Note**

Purchasers shall not, and agree not to enable third parties to, analyze, copy, reverse engineer or otherwise attempt to determine the structure or sequence of the product.

**DATA IMAGES**

**GTX54803 IHC-P Image**

IHC-P analysis of rat cardiac muscle tissue using GTX54803 Nav1.5 antibody. Staining is specific for cardiomyocytes while smooth muscles cells in the artery walls are negative (red arrows). Hematoxylin is used as the counterstain.

Dilution : 1:100


**GTX54803 WB Image**

WB analysis of NaV1.5 transfected HEK-293 cell lysate using GTX54803 Nav1.5 antibody preincubated with or without immunogen peptide.

Dilution : 1:200



For full product information, images and publications, please visit our [website](https://www.genetex.com).