

## Cav2.2 antibody

Cat. No. GTX54812

<b>Host</b>	Rabbit
<b>Clonality</b>	Polyclonal
<b>Isotype</b>	IgG
<b>Applications</b>	WB, ICC/IF, IHC-Fr, IP
<b>Reactivity</b>	Human, Mouse, Rat

References ( 1 )

Package

50 µl

## Applications

## Application Note

\*Optimal dilutions/concentrations should be determined by the researcher.

Suggested dilution	Recommended dilution
WB	Assay dependent
ICC/IF	Assay dependent
IHC-Fr	Assay dependent
IP	Assay dependent

Not tested in other applications.

## Properties

<b>Form</b>	Liquid
<b>Buffer</b>	PBS, 1% BSA
<b>Preservative</b>	0.05% Sodium azide
<b>Storage</b>	Store as concentrated solution. Centrifuge briefly prior to opening vial. For short-term storage (1-2 weeks), store at 4°C. For long-term storage, aliquot and store at -20°C or below. Avoid multiple freeze-thaw cycles.
<b>Concentration</b>	0.8 mg/ml (Please refer to the vial label for the specific concentration.)
<b>Immunogen</b>	Peptide (C)RHHRHRDRDKTSASTPA, corresponding to amino acid residues 851-867 ( Intracellular loop between domains II and III) of rat CACNA1B (Accession : Q02294).
<b>Purification</b>	Purified by antigen-affinity chromatography
<b>Conjugation</b>	Unconjugated

## Note

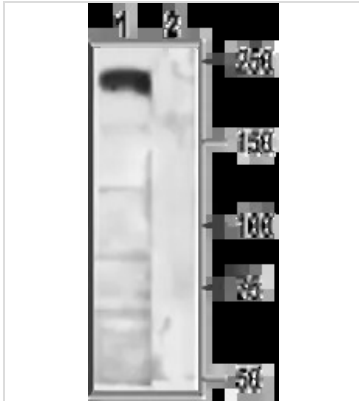
For laboratory research use only. Not for any clinical, therapeutic, or diagnostic use in humans or animals. Not for animal or human consumption.

Purchasers shall not, and agree not to enable third parties to, analyze, copy, reverse engineer or otherwise attempt to determine the structure or sequence of the product.



For full product information, images and publications, please visit our [website](#).

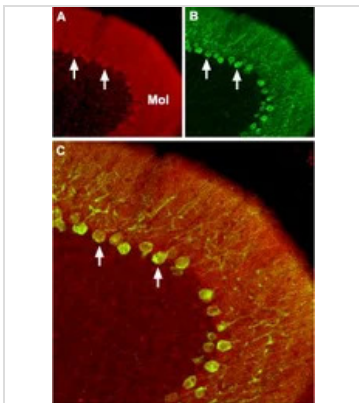
## DATA IMAGES



### GTX54812 WB Image

WB analysis of rat brain membrane lysate using GTX54812 Cav2.2 antibody preincubated with or without immunogen peptide.

Dilution : 1:200



### GTX54812 IHC-Fr Image

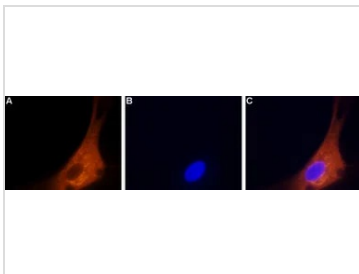
IHC-Fr analysis of mouse cerebellum tissue using GTX54812 Cav2.2 antibody.

Panel A : CaV2.2 (red) appears in Purkinje cells (arrows) and is distributed diffusely in the molecular layer (Mol).

Panel B : Staining of Purkinje cells with mouse anti-Calbindin 28K (green) demonstrates the restriction of CaV2.2 to cell bodies but not to dendrites in the molecular layer.

Panel C : Merged image of panels A and B.

Dilution : 1:100



### GTX54812 ICC/IF Image

ICC/IF analysis of PFA-fixed rat DRG primary cells using GTX54812 Cav2.2 antibody.

Panel A : Primary antibody

Panel B : DNA dye Hoechst 33342

Panel C : Merged images of panels A and B

Dilution : 1:200



For full product information, images and publications, please visit our [website](https://www.genetex.com).