

# Connexin 26 antibody

**Cat. No. GTX54817**

<b>Host</b>	Rabbit
<b>Clonality</b>	Polyclonal
<b>Isotype</b>	IgG
<b>Applications</b>	WB, ICC/IF, IHC
<b>Reactivity</b>	Human, Mouse, Rat

**Package**

50 µl

## Applications

### Application Note

\*Optimal dilutions/concentrations should be determined by the researcher.

Suggested dilution	Recommended dilution
WB	Assay dependent
ICC/IF	Assay dependent
IHC	Assay dependent

Not tested in other applications.

**Calculated MW** 26 kDa. ( [Note](#) )

## Properties

<b>Form</b>	Liquid
<b>Buffer</b>	PBS, 1% BSA
<b>Preservative</b>	0.05% Sodium azide
<b>Storage</b>	Store as concentrated solution. Centrifuge briefly prior to opening vial. For short-term storage (1-2 weeks), store at 4°C. For long-term storage, aliquot and store at -20°C or below. Avoid multiple freeze-thaw cycles.
<b>Concentration</b>	0.8 mg/ml (Please refer to the vial label for the specific concentration.)
<b>Immunogen</b>	Peptide (C)HEKKRKFMKGEEK, corresponding to amino acid residues 100-112 (Intracellular, cytoplasmic loop) of rat Connexin-26 (Accession : P21994).
<b>Purification</b>	Purified by antigen-affinity chromatography
<b>Conjugation</b>	Unconjugated

### Note

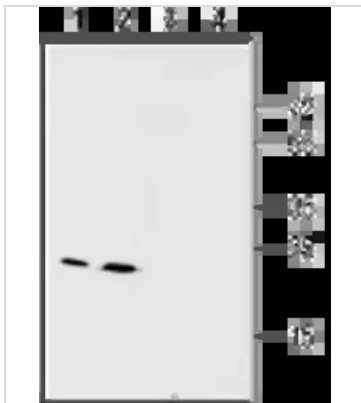
For laboratory research use only. Not for any clinical, therapeutic, or diagnostic use in humans or animals. Not for animal or human consumption.

Purchasers shall not, and agree not to enable third parties to, analyze, copy, reverse engineer or otherwise attempt to determine the structure or sequence of the product.



For full product information, images and publications, please visit our [website](#).

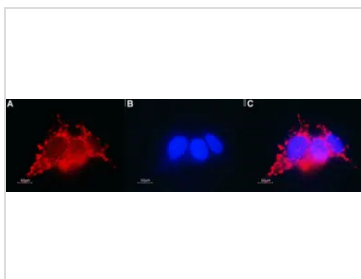
## DATA IMAGES



### GTX54817 WB Image

WB analysis of mouse (lanes 1 and 3) and rat (lanes 2 and 4) liver membrane lysates using GTX54817 Connexin 26 antibody preincubated with or without immunogen peptide.

Dilution : 1:200



### GTX54817 ICC/IF Image

ICC/IF analysis of HepG2 cells using GTX54817 Connexin 26 antibody.

Panel A : Primary antibody

Panel B : DNA dye Hoechst 33342

Panel C : Merged images of panels A and B

Dilution : 1:400



For full product information, images and publications, please visit our [website](#).