

# Connexin 43 antibody

**Cat. No. GTX54818**

<b>Host</b>	Rabbit
<b>Clonality</b>	Polyclonal
<b>Isotype</b>	IgG
<b>Applications</b>	WB, ICC/IF, IHC-Fr, IHC (Free Floating)
<b>Reactivity</b>	Human, Mouse, Rat

References ( 1 )

Package

50 µl

## Applications

### Application Note

\*Optimal dilutions/concentrations should be determined by the researcher.

Suggested dilution	Recommended dilution
WB	Assay dependent
ICC/IF	Assay dependent
IHC-Fr	Assay dependent
IHC (Free Floating)	Assay dependent

Not tested in other applications.

**Calculated MW** 43 kDa. ( [Note](#) )

## Properties

<b>Form</b>	Liquid
<b>Buffer</b>	PBS, 1% BSA
<b>Preservative</b>	0.05% Sodium azide
<b>Storage</b>	Store as concentrated solution. Centrifuge briefly prior to opening vial. For short-term storage (1-2 weeks), store at 4°C. For long-term storage, aliquot and store at -20°C or below. Avoid multiple freeze-thaw cycles.
<b>Concentration</b>	0.8 mg/ml (Please refer to the vial label for the specific concentration.)
<b>Immunogen</b>	Peptide (C)HAQPFDFPDDNQNSK, corresponding to amino acids residues 331-345 (Intracellular, C-terminus) of human Connexin-43 (Accession : P17302).
<b>Purification</b>	Purified by antigen-affinity chromatography
<b>Conjugation</b>	Unconjugated

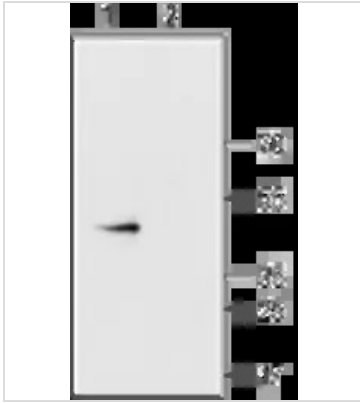


For full product information, images and publications, please visit our [website](#).

For laboratory research use only. Not for any clinical, therapeutic, or diagnostic use in humans or animals. Not for animal or human consumption.

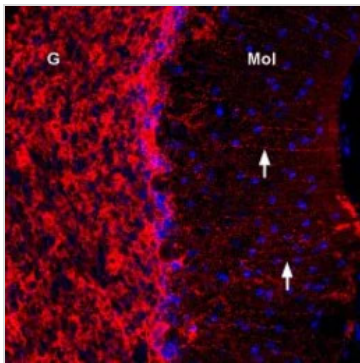
**Note**

Purchasers shall not, and agree not to enable third parties to, analyze, copy, reverse engineer or otherwise attempt to determine the structure or sequence of the product.

**DATA IMAGES**

**GTX54818 WB Image**

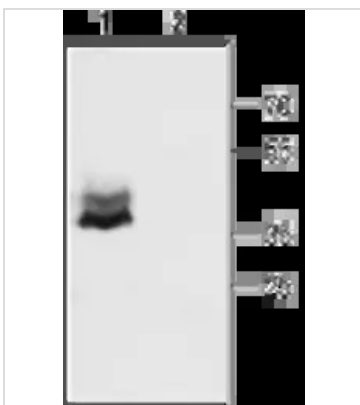
WB analysis of rat heart membrane lysate using GTX54818 Connexin 43 antibody preincubated with or without immunogen peptide.

Dilution : 1:400


**GTX54818 WB Image**

IHC-Frfl (free floating) analysis of rat cerebellum tissue using GTX54818 Connexin 43 antibody. Cx43 staining (red) appeared in Bergmann glial fibers (arrows) in the molecular layer (MOL) and in the granule layer (G). Cell nuclei were stained with DAPI (blue).

Dilution : 1:300


**GTX54818 IHC (Free Floating) Image**

WB analysis of mouse brain membrane lysates using GTX54818 Connexin 43 antibody preincubated with or without immunogen peptide.

Dilution : 1:400



For full product information, images and publications, please visit our [website](https://www.genetex.com).