

# HCN4 antibody

**Cat. No. GTX54825**

<b>Host</b>	Rabbit
<b>Clonality</b>	Polyclonal
<b>Isotype</b>	IgG
<b>Applications</b>	WB, ICC/IF, IHC-Fr, IP
<b>Reactivity</b>	Human, Mouse, Rat

**Package**

50 µl

## Applications

### Application Note

\*Optimal dilutions/concentrations should be determined by the researcher.

Suggested dilution	Recommended dilution
WB	Assay dependent
ICC/IF	Assay dependent
IHC-Fr	Assay dependent
IP	Assay dependent

Not tested in other applications.

**Calculated MW** 129 kDa. ([Note](#))

## Properties

<b>Form</b>	Liquid
<b>Buffer</b>	PBS, 1% BSA
<b>Preservative</b>	0.05% Sodium azide
<b>Storage</b>	Store as concentrated solution. Centrifuge briefly prior to opening vial. For short-term storage (1-2 weeks), store at 4°C. For long-term storage, aliquot and store at -20°C or below. Avoid multiple freeze-thaw cycles.
<b>Concentration</b>	0.8 mg/ml (Please refer to the vial label for the specific concentration.)
<b>Immunogen</b>	GST fusion protein with sequence HGHLHDSAEERRLIAEGDASPG EDRTPPGLAAEPPERP, corresponding to amino acid residues 119-155 (Intracellular, N-terminus) of human HCN4 (Accession : Q9Y3Q4), (MW: 31 kDa.).
<b>Purification</b>	Depleted of anti-GST antibodies by affinity chromatography on immobilized GST and purified by antigen-affinity chromatography. From serum
<b>Conjugation</b>	Unconjugated



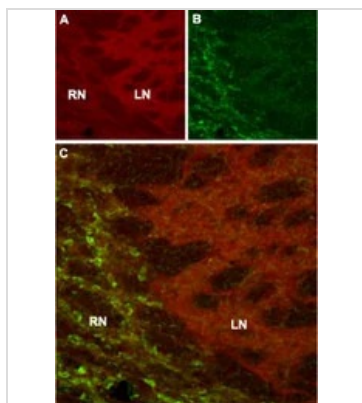
For full product information, images and publications, please visit our [website](#).

For laboratory research use only. Not for any clinical, therapeutic, or diagnostic use in humans or animals. Not for animal or human consumption.

## Note

Purchasers shall not, and agree not to enable third parties to, analyze, copy, reverse engineer or otherwise attempt to determine the structure or sequence of the product.

## DATA IMAGES



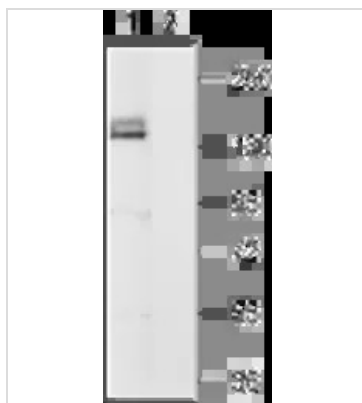
### GTX54825 IHC-Fr Image

IHC-Fr analysis of mouse thalamus tissue using GTX54825 HCN4 antibody.

Panel A : HCN4 (red) appears in the neuropil of the lateral nucleus (LN).

Panel B : Staining of reticular nucleus (RN) with mouse anti-Parvalbumin.

Panel C : Merge of HCN4 and Parvalbumin images demonstrates separate localization of these proteins in the thalamus.



### GTX54825 WB Image

WB analysis of rat brain membrane lysate using GTX54825 HCN4 antibody preincubated with or without immunogen peptide.

Dilution : 1:200



For full product information, images and publications, please visit our [website](#).