

Orai1 antibody

Cat. No. GTX54826

Host	Rabbit
Clonality	Polyclonal
Isotype	IgG
Applications	WB, ICC/IF, FCM, IHC
Reactivity	Human

Package

50 µl

Applications

Application Note

*Optimal dilutions/concentrations should be determined by the researcher.

Suggested dilution	Recommended dilution
WB	Assay dependent
ICC/IF	Assay dependent
FCM	Assay dependent
IHC	Assay dependent

Not tested in other applications.

Calculated MW 33 kDa. ([Note](#))

Product Note We do not recommend use of this product for Mouse,Rat samples.

Properties

Form	Liquid
Buffer	PBS, 1% BSA
Preservative	0.05% Sodium azide
Storage	Store as concentrated solution. Centrifuge briefly prior to opening vial. For short-term storage (1-2 weeks), store at 4°C. For long-term storage, aliquot and store at -20°C or below. Avoid multiple freeze-thaw cycles.
Concentration	0.65 mg/ml (Please refer to the vial label for the specific concentration.)
Immunogen	Peptide (C)KKQPGQPRPTSK, corresponding to amino acid residues 203-214 (2nd extracellular loop) of human Orai1 (Accession : Q96D31).
Purification	Purified by antigen-affinity chromatography
Conjugation	Unconjugated



For full product information, images and publications, please visit our [website](#).

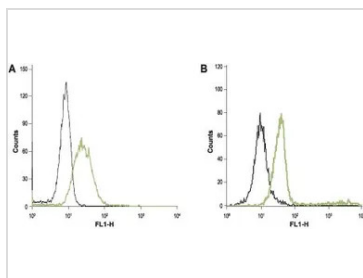
Date 2026 / 02 / 02 Page 1 of 2

For laboratory research use only. Not for any clinical, therapeutic, or diagnostic use in humans or animals. Not for animal or human consumption.

Note

Purchasers shall not, and agree not to enable third parties to, analyze, copy, reverse engineer or otherwise attempt to determine the structure or sequence of the product.

DATA IMAGES



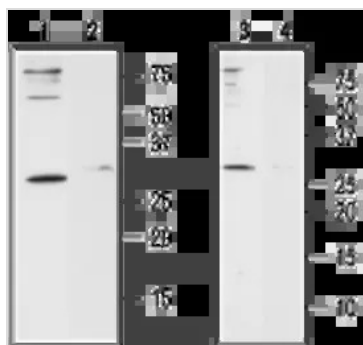
GTx54826 FCM Image

FACS analysis of HL-60 (A) and Jurkat (B) cells using GTx54826 Orai1 antibody.

Black : Unstained cell

Green : Cell staining with primary antibody

Antibody amount : 5-10 μ g antibody / $0.5-1 \times 10^6$ cells



GTx54826 WB Image

WB analysis of Jurkat (lanes 1 and 2) and HL-60 (lanes 3 and 4) cell lysates using GTx54826 Orai1 antibody preincubated with or without immunogen peptide.

Dilution : 1:200



For full product information, images and publications, please visit our [website](https://www.genetex.com).