

Kir2.1 antibody

Cat. No. GTX54830

Host	Rabbit
Clonality	Polyclonal
Isotype	IgG
Applications	WB, ICC/IF, FCM, IP, IHC
Reactivity	Human, Mouse, Rat

References (1)

Package

50 µl

Applications

Application Note

*Optimal dilutions/concentrations should be determined by the researcher.

Suggested dilution	Recommended dilution
WB	Assay dependent
ICC/IF	Assay dependent
FCM	Assay dependent
IP	Assay dependent
IHC	Assay dependent

Not tested in other applications.

Calculated MW 48 kDa. ([Note](#))

Properties

Form	Liquid
Buffer	PBS, 1% BSA
Preservative	0.05% Sodium azide
Storage	Store as concentrated solution. Centrifuge briefly prior to opening vial. For short-term storage (1-2 weeks), store at 4°C. For long-term storage, aliquot and store at -20°C or below. Avoid multiple freeze-thaw cycles.
Concentration	0.6 mg/ml (Please refer to the vial label for the specific concentration.)
Immunogen	Peptide (C)NGVPESTSTDTPPIDLHN, corresponding to amino acid residues 392-410 (Intracellular, C-terminal part) of human Kir2.1 (Accession : P48049).
Purification	Purified by antigen-affinity chromatography
Conjugation	Unconjugated



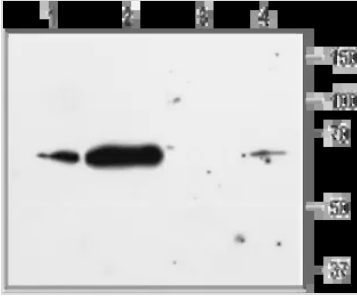
For full product information, images and publications, please visit our [website](#).

For laboratory research use only. Not for any clinical, therapeutic, or diagnostic use in humans or animals. Not for animal or human consumption.

Note

Purchasers shall not, and agree not to enable third parties to, analyze, copy, reverse engineer or otherwise attempt to determine the structure or sequence of the product.

DATA IMAGES

**GTX54830 WB Image**

WB analysis of rat heart (lanes 1 and 3) and rat brain (lanes 2 and 4) membrane lysates using GTX54830 Kir2.1 antibody preincubated with or without immunogen peptide.

Dilution : 1:200



For full product information, images and publications, please visit our [website](#).