

## Kv1.2 antibody

Cat. No. GTX54835

Host	Rabbit
Clonality	Polyclonal
Isotype	IgG
Applications	WB, ICC/IF, IHC-Fr
Reactivity	Human, Mouse, Rat

## Package

50 µl

## Applications

## Application Note

\*Optimal dilutions/concentrations should be determined by the researcher.

Suggested dilution	Recommended dilution
WB	Assay dependent
ICC/IF	Assay dependent
IHC-Fr	Assay dependent

Not tested in other applications.

**Calculated MW** 57 kDa. ( [Note](#) )

## Properties

Form	Liquid
Buffer	PBS, 1% BSA, 5% Sucrose
Preservative	0.025% Sodium azide
Storage	Store as concentrated solution. Centrifuge briefly prior to opening vial. For short-term storage (1-2 weeks), store at 4°C. For long-term storage, aliquot and store at -20°C or below. Avoid multiple freeze-thaw cycles.
Concentration	0.8 mg/ml (Please refer to the vial label for the specific concentration.)
Immunogen	GST fusion protein with sequence YHRETEGEEQAQYLQVTSCPKIPSSPDLKK SRSASTISKSDYMEIQEGVNNNSNEDFREENLKTANCTLANTNYVNITKMLTDV, corresponding to amino acid residues 417-499 (Intracellular, C-terminus) of rat KV1.2 (Accession : P63142).
Purification	Depleted of anti-GST antibodies by affinity chromatography on immobilized GST and from cross-reactive antibodies on immobilized KV1.1-GST-fusion protein and KV1.4-GST-fusion protein, and then the antibody was purified by antigen- affinity chromatography. From serum
Conjugation	Unconjugated



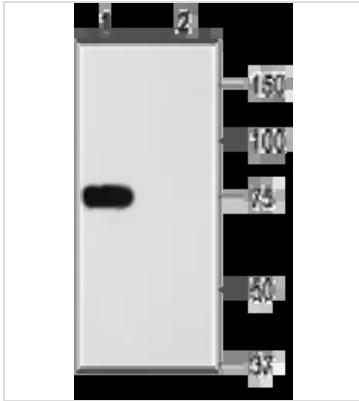
For full product information, images and  
publications, please visit our [website](#).

For laboratory research use only. Not for any clinical, therapeutic, or diagnostic use in humans or animals. Not for animal or human consumption.

## Note

Purchasers shall not, and agree not to enable third parties to, analyze, copy, reverse engineer or otherwise attempt to determine the structure or sequence of the product.

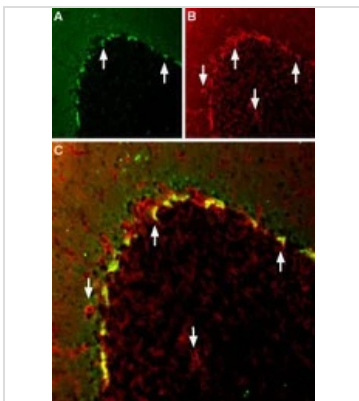
## DATA IMAGES



### GTx54835 WB Image

WB analysis of rat brain membrane lysate using GTx54835 Kv1.2 antibody preincubated with or without immunogen peptide.

Dilution : 1:200



### GTx54835 IHC-Fr Image

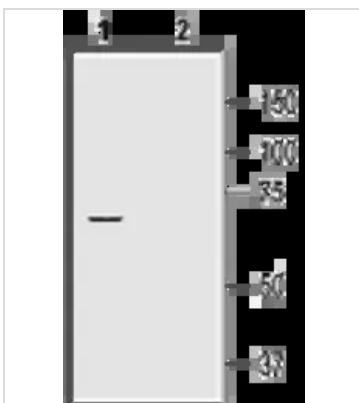
IHC-Fr analysis of mouse cerebellum tissue using GTx54835 Kv1.2 antibody.

Panel A : KV1.2 (green)

Panel B : KV1.1 staining (red)

Panel C : Merge of the two images suggests considerable co-localization in the pinceau structures (up-pointing arrows). KV1.1 also appears in blood vessels (down-pointing arrows), where no KV1.2 expression is observed.

Dilution : 1:100



### GTx54835 WB Image

WB analysis of rat heart membrane lysates using GTx54835 Kv1.2 antibody preincubated with or without immunogen peptide.

Dilution : 1:200



For full product information, images and publications, please visit our [website](https://www.genetex.com).