

Nav1.1 antibody

Cat. No. GTX54841

Host	Rabbit
Clonality	Polyclonal
Isotype	IgG
Applications	WB, ICC/IF, IHC-Fr, IP
Reactivity	Human, Mouse, Rat

Package

50 µl

Applications

Application Note

*Optimal dilutions/concentrations should be determined by the researcher.

Suggested dilution	Recommended dilution
WB	Assay dependent
ICC/IF	Assay dependent
IHC-Fr	Assay dependent
IP	Assay dependent

Not tested in other applications.

Calculated MW 229 kDa. ([Note](#))

Properties

Form	Liquid
Buffer	PBS, 1% BSA
Preservative	0.05% Sodium azide
Storage	Store as concentrated solution. Centrifuge briefly prior to opening vial. For short-term storage (1-2 weeks), store at 4°C. For long-term storage, aliquot and store at -20°C or below. Avoid multiple freeze-thaw cycles.
Concentration	0.6 mg/ml (Please refer to the vial label for the specific concentration.)
Immunogen	Peptide (C)TASEHSREPSAAGRLSD, corresponding to amino acid residues 465-481 (Intracellular loop between domains I and II) of rat Nav1.1 (Accession : P04774).
Purification	Purified by antigen-affinity chromatography
Conjugation	Unconjugated

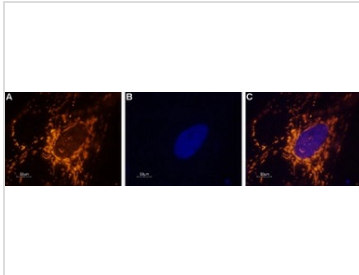


For full product information, images and publications, please visit our [website](#).

For laboratory research use only. Not for any clinical, therapeutic, or diagnostic use in humans or animals. Not for animal or human consumption.

Note

Purchasers shall not, and agree not to enable third parties to, analyze, copy, reverse engineer or otherwise attempt to determine the structure or sequence of the product.

DATA IMAGES

GTX54841 ICC/IF Image

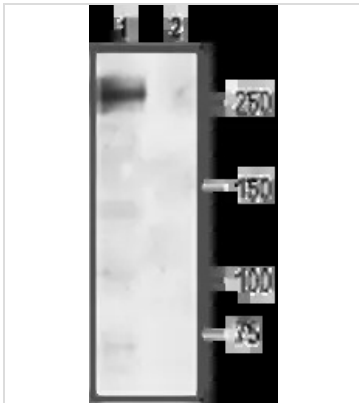
ICC/IF analysis of PFA-fixed rat DRG cells using GTX54841 Nav1.1 antibody.

Panel A : Primary antibody

Panel B : DNA dye Hoechst 33342

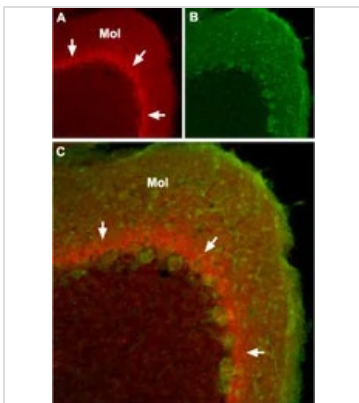
Panel C : Merged images of panels A and B

Dilution : 1:200


GTX54841 WB Image

WB analysis of rat brain membrane lysate using GTX54841 Nav1.1 antibody preincubated with or without immunogen peptide.

Dilution : 1:200


GTX54841 IHC-Fr Image

IHC-Fr analysis of mouse cerebellum tissue using GTX54841 Nav1.1 antibody.

Panel A : The distribution of NaV1.1 (red) forms a band (arrows) in the molecular layer (Mol), close to the Purkinje cell bodies.

Panel B : Purkinje nerve cells are stained with mouse anti-Parvalbumin (green).

Panel C : Confocal merge of NaV1.1 and Parvalbumin.



For full product information, images and publications, please visit our [website](https://www.genetex.com).