

Nectin 1 antibody

Cat. No. GTX54843

Host	Rabbit
Clonality	Polyclonal
Isotype	IgG
Applications	WB, ICC/IF, IHC-Fr, FCM, IHC (Free Floating), LCI
Reactivity	Human, Mouse, Rat

Package

50 µl

Applications

Application Note

*Optimal dilutions/concentrations should be determined by the researcher.

Suggested dilution	Recommended dilution
WB	Assay dependent
ICC/IF	Assay dependent
IHC-Fr	Assay dependent
FCM	Assay dependent
IHC (Free Floating)	Assay dependent
LCI	Assay dependent

Not tested in other applications.

Calculated MW 57 kDa. ([Note](#))**Product Note** This antibody will recognize all known isoforms of Nectin-1, including the secreted form (also known as isoform gamma).

Properties

Form	Liquid
Buffer	PBS, 1% BSA
Preservative	0.05% Sodium azide
Storage	Store as concentrated solution. Centrifuge briefly prior to opening vial. For short-term storage (1-2 weeks), store at 4°C. For long-term storage, aliquot and store at -20°C or below. Avoid multiple freeze-thaw cycles.
Concentration	0.8 mg/ml (Please refer to the vial label for the specific concentration.)
Immunogen	Peptide (C)GKPPSVVSWETRLK, corresponding to amino acid residues 177-190 (Extracellular, N-terminus) of human Nectin-1 (Accession : Q15223).
Purification	Purified by antigen-affinity chromatography



For full product information, images and publications, please visit our [website](#).

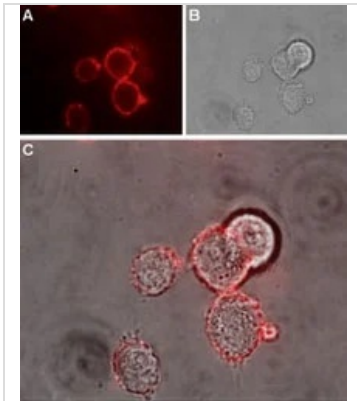
Conjugation

Unconjugated

Note

For laboratory research use only. Not for any clinical, therapeutic, or diagnostic use in humans or animals. Not for animal or human consumption.

Purchasers shall not, and agree not to enable third parties to, analyze, copy, reverse engineer or otherwise attempt to determine the structure or sequence of the product.

DATA IMAGES

GTX54843 LCI Image

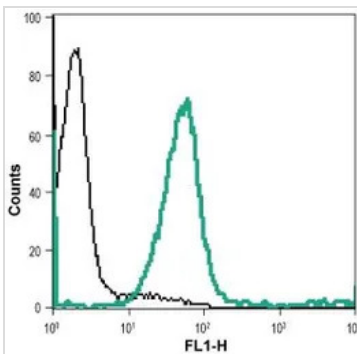
Live cell imaging analysis of live intact PC12 cells using GTX54843 Nectin 1 antibody.

Panel A : Primary antibody (Red)

Panel B : Live view of the cell

Panel C : Merged images of Panel A and B

Dilution : 1:100


GTX54843 FCM Image

FACS analysis of THP-1 cells using GTX54843 Nectin 1 antibody.

Black : Unstained cell

Green : Cell staining with primary antibody

Dilution : 1:15


GTX54843 WB Image

WB analysis of Jurkat (lanes 1 and 3) and MEG-01 (lanes 2 and 4) cell lysates using GTX54843 Nectin 1 antibody preincubated with or without immunogen peptide.

Dilution : 1:200



For full product information, images and publications, please visit our [website](https://www.genetex.com).