

Nectin 2 antibody

Cat. No. GTX54844

Host	Rabbit
Clonality	Polyclonal
Isotype	IgG
Applications	WB, IHC-Fr, FCM
Reactivity	Human, Mouse, Rat

Package

50 µl

Applications

Application Note

*Optimal dilutions/concentrations should be determined by the researcher.

Suggested dilution	Recommended dilution
WB	Assay dependent
IHC-Fr	Assay dependent
FCM	Assay dependent

Not tested in other applications.

Calculated MW 57 kDa. ([Note](#))

Properties

Form	Liquid
Buffer	PBS, 1% BSA
Preservative	0.05% Sodium azide
Storage	Store as concentrated solution. Centrifuge briefly prior to opening vial. For short-term storage (1-2 weeks), store at 4°C. For long-term storage, aliquot and store at -20°C or below. Avoid multiple freeze-thaw cycles.
Concentration	0.8 mg/ml (Please refer to the vial label for the specific concentration.)
Immunogen	Peptide (C)RVIAQPENHAEAEQ, corresponding to amino acid residues 148-161 (Extracellular, N-terminus) of mouse Nectin-2 (Accession : P32507).
Purification	Purified by antigen-affinity chromatography
Conjugation	Unconjugated

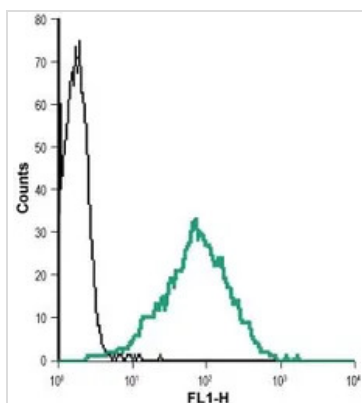
Note

For laboratory research use only. Not for any clinical, therapeutic, or diagnostic use in humans or animals. Not for animal or human consumption.

Purchasers shall not, and agree not to enable third parties to, analyze, copy, reverse engineer or otherwise attempt to determine the structure or sequence of the product.



For full product information, images and publications, please visit our [website](#).

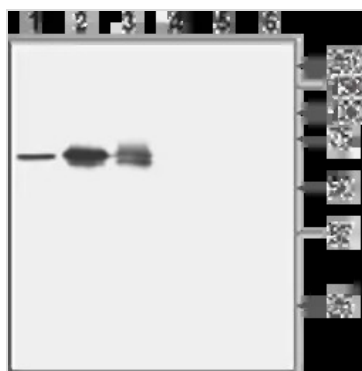
DATA IMAGES

GTx54844 FCM Image

FACS analysis of Jurkat cells using GTx54844 Nectin 2 antibody.

Black : Unstained cell

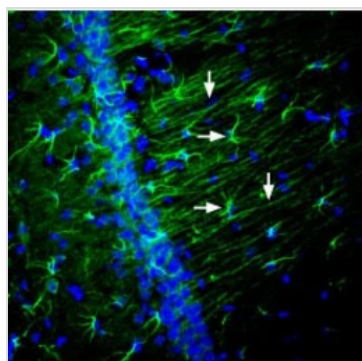
Green : Cell staining with primary antibody

Dilution : 1:15


GTx54844 WB Image

WB analysis of rat spleen (lanes 1 and 4), Jurkat (lanes 2 and 5), and K562 (lanes 3 and 6) lysates using GTx54844 Nectin 2 antibody preincubated with or without immunogen peptide.

Dilution : 1:200


GTx54844 IHC-Fr Image

IHC-Fr analysis of rat hippocampus tissue using GTx54844 Nectin 2 antibody. Nectin-2 staining (green) appears in in apical dendrites of CA1 pyramidal neurons (vertical arrows) and in astrocytes (horizontal arrows). Cell nuclei are stained with DAPI (blue).

Dilution : 1:600



For full product information, images and publications, please visit our [website](https://www.genetex.com).