

Neurexin 3 antibody

Cat. No. GTX54846

Host	Rabbit
Clonality	Polyclonal
Isotype	IgG
Applications	WB, IHC-Fr
Reactivity	Human, Mouse, Rat

Package

50 µl

Applications

Application Note

*Optimal dilutions/concentrations should be determined by the researcher.

Suggested dilution	Recommended dilution
WB	Assay dependent
IHC-Fr	Assay dependent

Not tested in other applications.

Calculated MW	174 kDa. (Note)
Product Note	Designed to recognize Neurexin 3α and not Neurexin 3β.

Properties

Form	Liquid
Buffer	PBS, 1% BSA
Preservative	0.05% Sodium azide
Storage	Store as concentrated solution. Centrifuge briefly prior to opening vial. For short-term storage (1-2 weeks), store at 4°C. For long-term storage, aliquot and store at -20°C or below. Avoid multiple freeze-thaw cycles.
Concentration	0.85 mg/ml (Please refer to the vial label for the specific concentration.)
Immunogen	Peptide (C)RYLRWDASTRSDLS, corresponding to amino acid residues 39-52 (Extracellular, N-terminus) of rat Neurexin 3α (Accession : Q07310).
Purification	Purified by antigen-affinity chromatography
Conjugation	Unconjugated

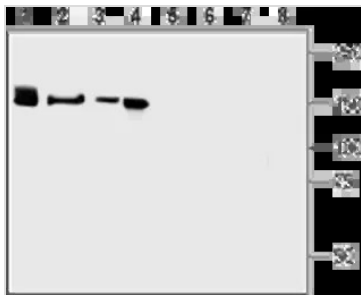
Note

For laboratory research use only. Not for any clinical, therapeutic, or diagnostic use in humans or animals. Not for animal or human consumption.

Purchasers shall not, and agree not to enable third parties to, analyze, copy, reverse engineer or otherwise attempt to determine the structure or sequence of the product.

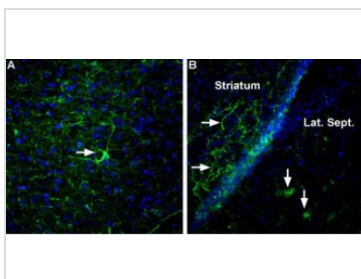


For full product information, images and publications, please visit our [website](#).

DATA IMAGES

GTX54846 WB Image

WB analysis of mouse (lanes 1 and 5), rat brain (lanes 2 and 6), SH-SY5Y cell (lanes 3 and 7), and PC-12 cell (lanes 4 and 8) lysates using GTX54846 Neurexin 3 antibody preincubated with or without immunogen peptide.

Dilution : 1:200


GTX54846 IHC-Fr Image

IHC-Fr analysis of rat and mouse brain tissue using GTX54846 Neurexin 3 antibody. DAPI is used as the counterstain (blue).

Panel A : Neurexin 3α (green) appears in neuronal outlines in entorhinal cortex (arrow).

Panel B : Neurexin 3α appeared in axonal processes in striatum (horizontal arrow) and in neuronal cell bodies in lateral septum (vertical arrows).

Dilution : 1:400



For full product information, images and publications, please visit our [website](https://www.genetex.com).