

Orexin Receptor 1 antibody

Cat. No. GTX54847

Host	Rabbit
Clonality	Polyclonal
Isotype	IgG
Applications	WB, ICC/IF, IHC-P, IHC-Fr
Reactivity	Human, Mouse, Rat

References (1)

Package

50 µl

Applications

Application Note

*Optimal dilutions/concentrations should be determined by the researcher.

Suggested dilution	Recommended dilution
WB	Assay dependent
ICC/IF	Assay dependent
IHC-P	Assay dependent
IHC-Fr	Assay dependent

Not tested in other applications.

Calculated MW 47 kDa. ([Note](#))

Properties

Form	Liquid
Buffer	PBS, 1% BSA
Preservative	0.05% Sodium azide
Storage	Store as concentrated solution. Centrifuge briefly prior to opening vial. For short-term storage (1-2 weeks), store at 4°C. For long-term storage, aliquot and store at -20°C or below. Avoid multiple freeze-thaw cycles.
Concentration	0.8 mg/ml (Please refer to the vial label for the specific concentration.)
Immunogen	Peptide (C)RNWKRPSQLEAQH, corresponding to amino acid residues 256-269 (3rd intracellular loop) of rat OX1R (Accession : P56718).
Purification	Purified by antigen-affinity chromatography
Conjugation	Unconjugated



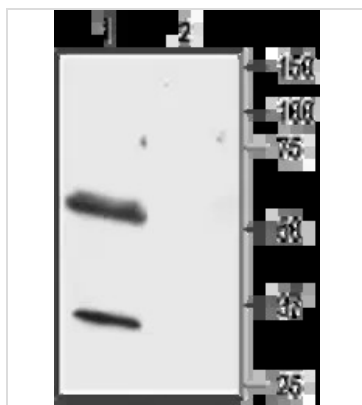
For full product information, images and publications, please visit our [website](#).

For laboratory research use only. Not for any clinical, therapeutic, or diagnostic use in humans or animals. Not for animal or human consumption.

Note

Purchasers shall not, and agree not to enable third parties to, analyze, copy, reverse engineer or otherwise attempt to determine the structure or sequence of the product.

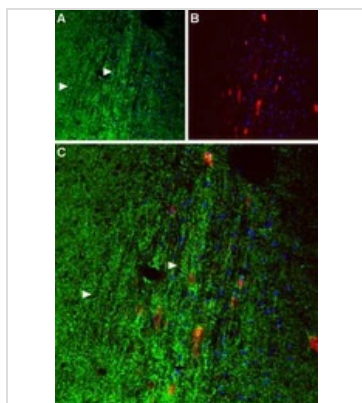
DATA IMAGES



GTX54847 WB Image

WB analysis of rat brain lysate using GTX54847 Orexin Receptor 1 antibody preincubated with or without immunogen peptide.

Dilution : 1:500



GTX54847 IHC-Fr Image

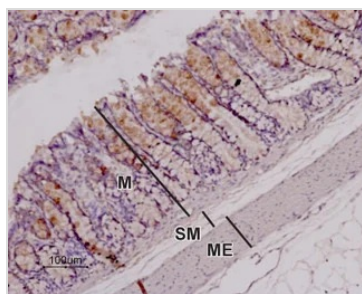
IHC-Fr analysis of mouse septum tissue using GTX54847 Orexin Receptor 1 antibody. Cell nuclei (blue) are visualized with Hoechst 33342.

Panel A : OX1R (green) appears in axonal processes (right-pointing triangles).

Panel B : Parvalbumin (red) appears in septal neurons.

Panel C : Merge of OX1R and parvalbumin suggests that orexinergic innervation covers the entire septal nucleus rather than restricted to individual neurons.

Dilution : 1:50



GTX54847 IHC-P Image

IHC-P analysis of rat colon tissue using GTX54847 Orexin Receptor 1 antibody. Note that the stain (red-brown color) is highly specific for absorptive cells in the superior third of the intestinal glands.

Immunolabeling was detected using DAB as the chromogen and hematoxylin as the counterstain.

Dilution : 1:100



For full product information, images and publications, please visit our [website](https://www.genetex.com).