

Orexin Receptor 2 antibody

Cat. No. GTX54848

Host	Rabbit
Clonality	Polyclonal
Isotype	IgG
Applications	WB, ICC/IF, IHC-Fr
Reactivity	Human, Mouse, Rat

Package

50 µl

Applications

Application Note

*Optimal dilutions/concentrations should be determined by the researcher.

Suggested dilution	Recommended dilution
WB	Assay dependent
ICC/IF	Assay dependent
IHC-Fr	Assay dependent

Not tested in other applications.

Calculated MW 52 kDa. ([Note](#))

Properties

Form	Liquid
Buffer	PBS, 1% BSA
Preservative	0.025% Sodium azide
Storage	Store as concentrated solution. Centrifuge briefly prior to opening vial. For short-term storage (1-2 weeks), store at 4°C. For long-term storage, aliquot and store at -20°C or below. Avoid multiple freeze-thaw cycles.
Concentration	0.8 mg/ml (Please refer to the vial label for the specific concentration.)
Immunogen	Peptide (C)DRLARGRTSTESRKS, corresponding to amino acid residues 391-405 (Intracellular, C-terminus) of rat OX2R (Accession : P56719).
Purification	Purified by antigen-affinity chromatography
Conjugation	Unconjugated

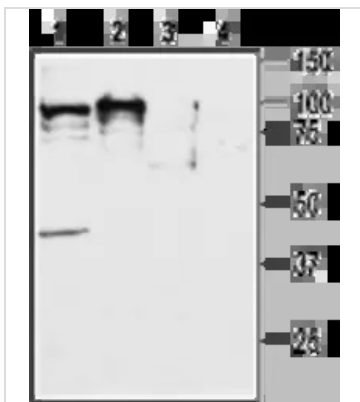
Note

For laboratory research use only. Not for any clinical, therapeutic, or diagnostic use in humans or animals. Not for animal or human consumption.

Purchasers shall not, and agree not to enable third parties to, analyze, copy, reverse engineer or otherwise attempt to determine the structure or sequence of the product.

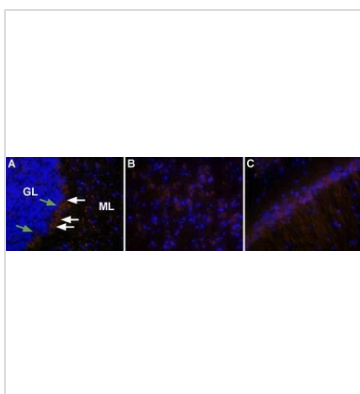


For full product information, images and publications, please visit our [website](#).

DATA IMAGES

GTX54848 WB Image

WB analysis of rat (lanes 1 and 3) and mouse (lanes 2 and 4) brain lysates using GTX54848 Orexin Receptor 2 antibody preincubated with or without immunogen peptide.

Dilution : 1:400


GTX54848 IHC-Fr Image

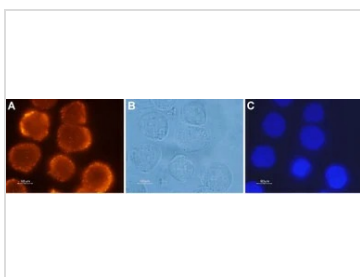
IHC-Fr analysis of rat brain tissue using GTX54848 Orexin Receptor 2 antibody. Hoechst 33342 is used as the counterstain (blue).

Panel A : In the cerebellum, staining is present in cell bodies of both Golgi type I (Purkinje cells – white arrows) and Golgi type II (green arrows) neurons. Staining is also present in fibers in the molecular layer (ML).

Panel B : In the parietal cortex, staining is evident in neural cell bodies.

Panel C : In the hippocampus, staining is present in pyramidal cells in the CA1 layer. Note that both cell bodies and prolongations are stained.

Dilution : 1:500


GTX54848 ICC/IF Image

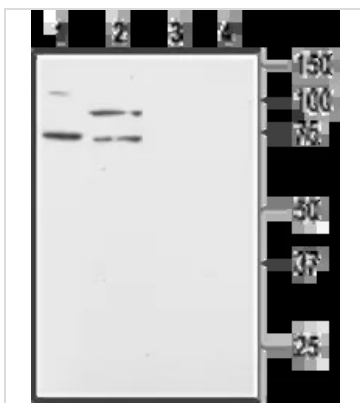
ICC/IF analysis of PFA-fixed human colon cancer cells using GTX54848 Orexin Receptor 2 antibody.

Panel A : Primary antibody

Panel B : Live view of the same field as in (A)

Panel C : DNA dye Hoechst 33342

Dilution : 1:500


GTX54848 WB Image

WB analysis of Colo-205 (lanes 1 and 3) and HT-29 (lanes 2 and 4) cell lysates using GTX54848 Orexin Receptor 2 antibody preincubated with or without immunogen peptide.

Dilution : 1:200



For full product information, images and publications, please visit our [website](http://www.genetex.com).