

PICK1 antibody

Cat. No. GTX54853

Host	Rabbit
Clonality	Polyclonal
Isotype	IgG
Applications	WB, IHC-Fr
Reactivity	Human, Mouse, Rat

Package
50 µl

Applications

Application Note

*Optimal dilutions/concentrations should be determined by the researcher.

Suggested dilution	Recommended dilution
WB	Assay dependent
IHC-Fr	Assay dependent

Not tested in other applications.

Calculated MW 47 kDa. ([Note](#))

Properties

Form	Liquid
Buffer	PBS, 1% BSA
Preservative	0.05% Sodium azide
Storage	Store as concentrated solution. Centrifuge briefly prior to opening vial. For short-term storage (1-2 weeks), store at 4°C. For long-term storage, aliquot and store at -20°C or below. Avoid multiple freeze-thaw cycles.
Concentration	0.8 mg/ml (Please refer to the vial label for the specific concentration.)
Immunogen	Peptide (C)RARFSQMRKDVLEK, corresponding to amino acid residues 305-318 (Intracellular, α-helix domain) of rat PICK1 (Accession : Q9EP80).
Purification	Purified by antigen-affinity chromatography
Conjugation	Unconjugated

Note

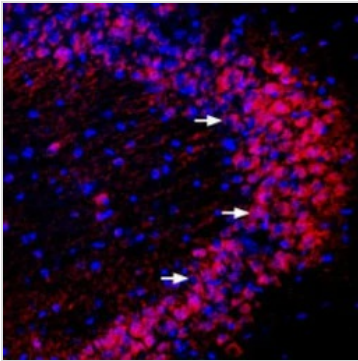
For laboratory research use only. Not for any clinical, therapeutic, or diagnostic use in humans or animals. Not for animal or human consumption.

Purchasers shall not, and agree not to enable third parties to, analyze, copy, reverse engineer or otherwise attempt to determine the structure or sequence of the product.



For full product information, images and publications, please visit our [website](#).

DATA IMAGES



GTX54853 IHC-Fr Image

IHC-Fr analysis of mouse hippocampus tissue using GTX54853 PICK1 antibody. PICK1 staining (red in the hippocampal CA3 region) is detected in neurons (arrows). Nuclei are stained with DAPI (blue).

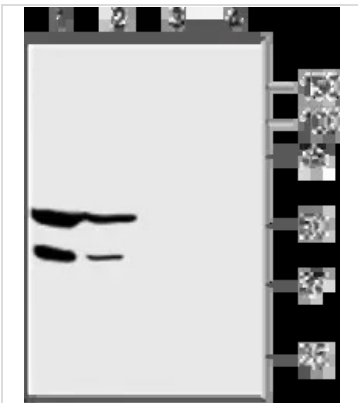
Dilution : 1:400



GTX54853 WB Image

WB analysis of mouse (lanes 1 and 3) and rat (lanes 2 and 4) brain membrane lysates using GTX54853 PICK1 antibody preincubated with or without immunogen peptide.

Dilution : 1:200



GTX54853 WB Image

WB analysis of PANC-1 (lanes 1 and 3) and HepG2 (lanes 2 and 4) cell lysates using GTX54853 PICK1 antibody preincubated with or without immunogen peptide.

Dilution : 1:200



For full product information, images and publications, please visit our [website](https://www.genetex.com).