

Sortilin 1 antibody

Cat. No. GTX54854

Host	Rabbit
Clonality	Polyclonal
Isotype	IgG
Applications	WB, IHC-Fr, FCM
Reactivity	Human, Mouse, Rat

References (3)

Package

50 µl

Applications

Application Note

*Optimal dilutions/concentrations should be determined by the researcher.

Suggested dilution	Recommended dilution
WB	Assay dependent
IHC-Fr	Assay dependent
FCM	Assay dependent

Not tested in other applications.

Calculated MW 92 kDa. ([Note](#))

Properties

Form	Liquid
Buffer	PBS, 1% BSA
Preservative	0.025% Sodium azide
Storage	Store as concentrated solution. Centrifuge briefly prior to opening vial. For short-term storage (1-2 weeks), store at 4°C. For long-term storage, aliquot and store at -20°C or below. Avoid multiple freeze-thaw cycles.
Concentration	0.4 mg/ml (Please refer to the vial label for the specific concentration.)
Immunogen	Peptide DKDTRRIHVSTDQD(C) corresponding to amino acid residues 320-335 (Extracellular domain) of human Sortilin (Accession : Q99523).
Purification	Purified by antigen-affinity chromatography
Conjugation	Unconjugated

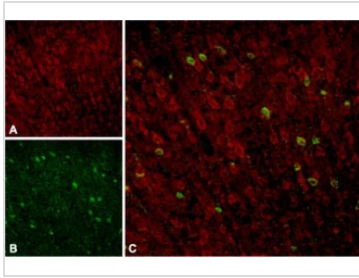
Note

For laboratory research use only. Not for any clinical, therapeutic, or diagnostic use in humans or animals. Not for animal or human consumption.

Purchasers shall not, and agree not to enable third parties to, analyze, copy, reverse engineer or otherwise attempt to determine the structure or sequence of the product.



For full product information, images and publications, please visit our [website](#).

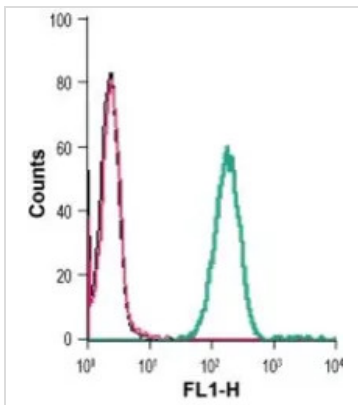
DATA IMAGES

GTX54854 IHC-Fr Image

IHC-Fr analysis of rat neocortex tissue using GTX54854 Sortilin 1 antibody.

Panel A : Sortilin appears in cortical neurons (red).

Panel B : Staining of interneurons with mouse anti-parvalbumin (PV, green).

Panel C : Merge of Sortilin and PV demonstrates separate localization in neocortex.


GTX54854 FCM Image

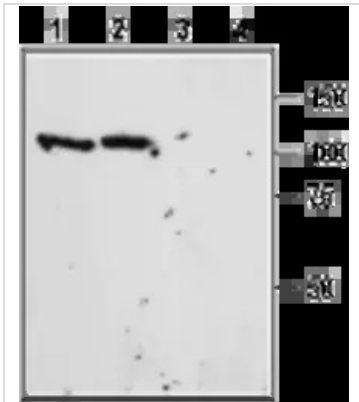
FACS analysis of THP-1 cells using GTX54854 Sortilin 1 antibody.

Black : Unstained cell

Red : Cell staining with isotype control antibody

Green : Cell staining with primary antibody

Antibody amount : 2.5 μ g


GTX54854 WB Image

WB analysis of mouse (lanes 1 and 3) and rat (lanes 2 and 4) brain lysates using GTX54854 Sortilin 1 antibody preincubated with or without immunogen peptide.

Dilution : 1:400



For full product information, images and publications, please visit our [website](https://www.genetex.com).