

STIM1 antibody

Cat. No. GTX54855

Host	Rabbit
Clonality	Polyclonal
Isotype	IgG
Applications	WB, ICC/IF, IHC-P, FCM, IP, LCI
Reactivity	Human, Mouse, Rat

References (1)

Package

50 µl

Applications

Application Note

*Optimal dilutions/concentrations should be determined by the researcher.

Suggested dilution	Recommended dilution
WB	Assay dependent
ICC/IF	Assay dependent
IHC-P	Assay dependent
FCM	Assay dependent
IP	Assay dependent
LCI	Assay dependent

Not tested in other applications.

Calculated MW 77 kDa. ([Note](#))

Properties

Form	Liquid
Buffer	PBS, 1% BSA
Preservative	0.05% Sodium azide
Storage	Store as concentrated solution. Centrifuge briefly prior to opening vial. For short-term storage (1-2 weeks), store at 4°C. For long-term storage, aliquot and store at -20°C or below. Avoid multiple freeze-thaw cycles.
Concentration	0.45 mg/ml (Please refer to the vial label for the specific concentration.)
Immunogen	Peptide CHSEDEKLSFEAVR, corresponding to amino acid residues 56-69 (STIM1 expressed on the plasma membrane: Extracellular, N-terminus st IM1 expressed on the ER: Luminal, N-terminus) of human STIM1 (Accession : Q13586).
Purification	Purified by antigen-affinity chromatography
Conjugation	Unconjugated

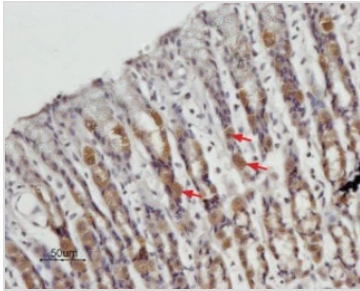


For full product information, images and publications, please visit our [website](#).

For laboratory research use only. Not for any clinical, therapeutic, or diagnostic use in humans or animals. Not for animal or human consumption.

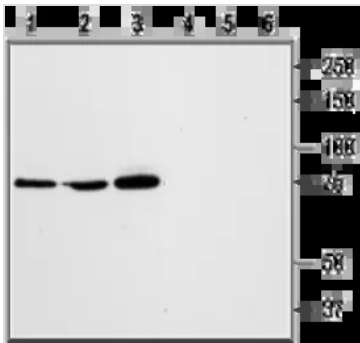
Note
 Purchasers shall not, and agree not to enable third parties to, analyze, copy, reverse engineer or otherwise attempt to determine the structure or sequence of the product.

DATA IMAGES



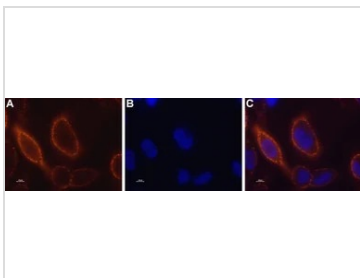
GTX54855 IHC-P Image

IHC-P analysis of rat stomach tissue using GTX54855 STIM1 antibody. STIM1 is expressed in the parietal cells of the gastric mucosa (arrows). Hematoxylin is used as the counterstain.
 Dilution : 1:100



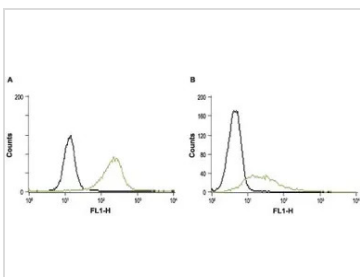
GTX54855 WB Image

WB analysis of RBL (lanes 1 and 4), HL-60 (lanes 2 and 5), and Jurkat (lanes 3 and 6) cell lysates using GTX54855 STIM1 antibody preincubated with or without immunogen peptide.
 Dilution : 1:1000



GTX54855 LCI Image

Live cell imaging analysis of live rat RBL cells using GTX54855 STIM1 antibody.
 Panel A : Primary antibody (Orange)
 Panel B : Hoechst 33342 for nuclear staining (blue)
 Panel C : Merged images of Panel A and B
 Dilution : 1:50



GTX54855 FCM Image

FACS analysis of RBL (A) and Jurkat (B) cells using GTX54855 STIM1 antibody.
 Black : Unstained cell
 Green : Cell staining with primary antibody
 Antibody amount : 5-10 µg antibody / 0.5-1 x 10⁶ cells



For full product information, images and publications, please visit our [website](#).