

TrkB antibody

Cat. No. GTX54857

Host	Rabbit
Clonality	Polyclonal
Isotype	IgG
Applications	WB, ICC/IF, IHC-Fr, FCM, LCI
Reactivity	Human, Mouse, Rat

References (8)

Package

50 µl

Applications

Application Note

*Optimal dilutions/concentrations should be determined by the researcher.

Suggested dilution	Recommended dilution
WB	Assay dependent
ICC/IF	Assay dependent
IHC-Fr	Assay dependent
FCM	Assay dependent
LCI	Assay dependent

Not tested in other applications.

Calculated MW 92 kDa. ([Note](#))

Properties

Form	Liquid
Buffer	PBS, 1% BSA
Preservative	0.025% Sodium azide
Storage	Store as concentrated solution. Centrifuge briefly prior to opening vial. For short-term storage (1-2 weeks), store at 4°C. For long-term storage, aliquot and store at -20°C or below. Avoid multiple freeze-thaw cycles.
Concentration	0.8 mg/ml (Please refer to the vial label for the specific concentration.)
Immunogen	Peptide (C)RLEPNSIDPENITE, corresponding to amino acid residues 57-70 (Extracellular domain) of rat TrkB (Accession : Q63604).
Purification	Purified by antigen-affinity chromatography
Conjugation	Unconjugated



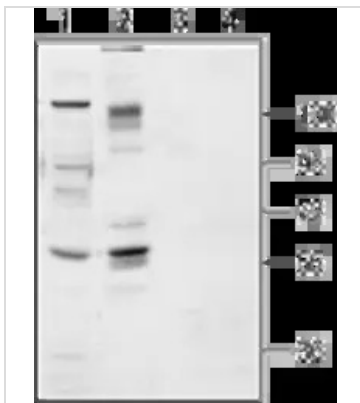
For full product information, images and publications, please visit our [website](#).

For laboratory research use only. Not for any clinical, therapeutic, or diagnostic use in humans or animals. Not for animal or human consumption.

Note

Purchasers shall not, and agree not to enable third parties to, analyze, copy, reverse engineer or otherwise attempt to determine the structure or sequence of the product.

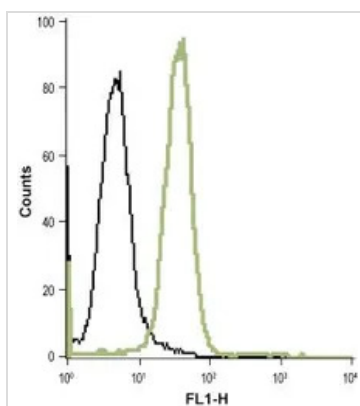
DATA IMAGES



GTX54857 WB Image

WB analysis of rat brain membranes (lanes 1 and 3) and HEK-TrkB transfected (lanes 2 and 4) lysates using GTX54857 TrkB antibody preincubated with or without immunogen peptide.

Dilution : 1:200



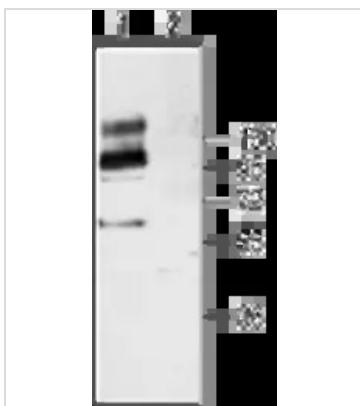
GTX54857 FCM Image

FACS analysis of HL-60 cells using GTX54857 TrkB antibody.

Black : Unstained cell

Green : Cell staining with primary antibody

Dilution : 1:25



GTX54857 WB Image

WB analysis of mouse brain tissue lysate using GTX54857 TrkB antibody preincubated with or without immunogen peptide.

Dilution : 1:200



For full product information, images and publications, please visit our [website](https://www.genetex.com).