

TrkC antibody

Cat. No. GTX54858

Host	Rabbit
Clonality	Polyclonal
Isotype	IgG
Applications	WB, ICC/IF, IHC-P, IHC-Fr, LCI
Reactivity	Human, Mouse, Rat

References (2)

Package

50 µl

Applications

Application Note

*Optimal dilutions/concentrations should be determined by the researcher.

Suggested dilution	Recommended dilution
WB	Assay dependent
ICC/IF	Assay dependent
IHC-P	Assay dependent
IHC-Fr	Assay dependent
LCI	Assay dependent

Not tested in other applications.

Calculated MW 97 kDa. ([Note](#))

Properties

Form	Liquid
Buffer	PBS, 1% BSA
Preservative	0.05% Sodium azide
Storage	Store as concentrated solution. Centrifuge briefly prior to opening vial. For short-term storage (1-2 weeks), store at 4°C. For long-term storage, aliquot and store at -20°C or below. Avoid multiple freeze-thaw cycles.
Concentration	0.8 mg/ml (Please refer to the vial label for the specific concentration.)
Immunogen	Peptide (C)GHFLKEPFPESTD, corresponding to amino acid residues 393-405 (Extracellular, N-terminus) of rat TrkC (Accession : Q03351).
Purification	Purified by antigen-affinity chromatography
Conjugation	Unconjugated

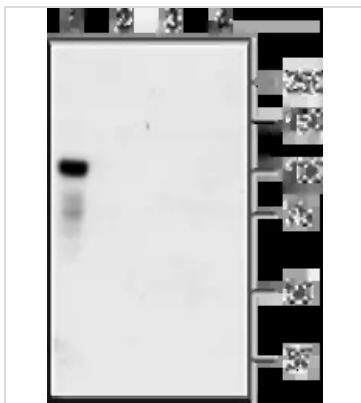


For full product information, images and publications, please visit our [website](#).

For laboratory research use only. Not for any clinical, therapeutic, or diagnostic use in humans or animals. Not for animal or human consumption.

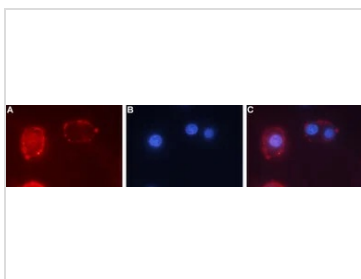
Note

Purchasers shall not, and agree not to enable third parties to, analyze, copy, reverse engineer or otherwise attempt to determine the structure or sequence of the product.

DATA IMAGES

GTX54858 WB Image

WB analysis of HEK-TrkC transfected cells (lanes 1 and 3) and HEK untransfected cells (lanes 2 and 4) lysates using GTX54858 TrkC antibody preincubated with or without immunogen peptide.

Dilution : 1:400


GTX54858 LCI Image

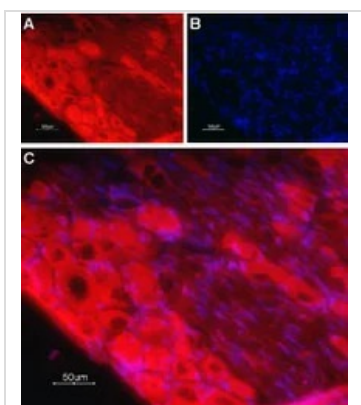
Live cell imaging analysis of live intact PC12 cells using GTX54858 TrkC antibody.

Panel A : Primary antibody (Red)

Panel B : Hoechst 33342 for nuclear staining (blue)

Panel C : Merged images of Panel A and B

Dilution : 1:50


GTX54858 IHC-Fr Image

IHC-Fr analysis of rat dorsal root ganglia tissue using GTX54858 TrkC antibody.

Panel A : TrkC (red) appears in cell bodies. Note that the nerve fibers are not stained.

Panel B : Nuclear staining (blue) was visualized using Hoechst 33342.

Panel C : Merge of A and B.

Dilution : 1:100



For full product information, images and publications, please visit our [website](https://www.genetex.com).