

TRPC3 antibody

Cat. No. GTX54860

Host	Rabbit
Clonality	Polyclonal
Isotype	IgG
Applications	WB, ICC/IF, IHC-P, IHC-Fr, FCM, IP
Reactivity	Human, Mouse, Rat

References (1)

Package

50 µl

Applications

Application Note

*Optimal dilutions/concentrations should be determined by the researcher.

Suggested dilution	Recommended dilution
WB	Assay dependent
ICC/IF	Assay dependent
IHC-P	Assay dependent
IHC-Fr	Assay dependent
FCM	Assay dependent
IP	Assay dependent

Not tested in other applications.

Properties

Form	Liquid
Buffer	PBS, 1% BSA
Preservative	0.05% Sodium azide
Storage	Store as concentrated solution. Centrifuge briefly prior to opening vial. For short-term storage (1-2 weeks), store at 4°C. For long-term storage, aliquot and store at -20°C or below. Avoid multiple freeze-thaw cycles.
Concentration	0.8 mg/ml (Please refer to the vial label for the specific concentration.)
Immunogen	Peptide HKLSEKLNPSVLRC, corresponding to amino acid residues 822-835 (Intracellular, C-terminus) of mouse TRPC3 (Accession : Q9QZC1).
Purification	Purified by antigen-affinity chromatography
Conjugation	Unconjugated

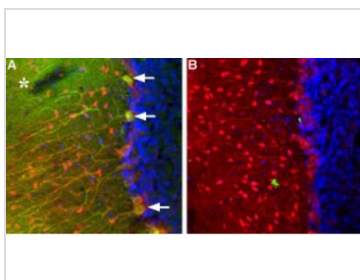


For full product information, images and publications, please visit our [website](#).

For laboratory research use only. Not for any clinical, therapeutic, or diagnostic use in humans or animals. Not for animal or human consumption.

Note

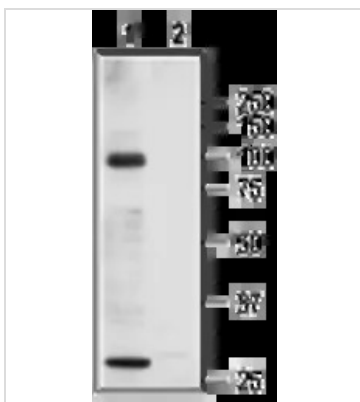
Purchasers shall not, and agree not to enable third parties to, analyze, copy, reverse engineer or otherwise attempt to determine the structure or sequence of the product.

DATA IMAGES

GTX54860 IHC-Fr Image

IHC-Fr analysis of rat cerebellum tissue using GTX54860 TRPC3 antibody. DAPI is used as the counterstain (blue).

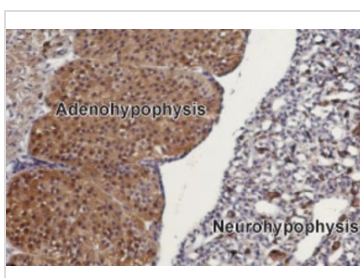
Panel A : TRPC3 (green) appears in Purkinje cells (arrows) including both soma and dendrites and as well as in the molecular layer neuropil (asterisk). Staining of the same section with mouse anti-parvalbumin (red) reveals that TRPC3 is not expressed in molecular layer interneurons.

Panel B : Pre-incubating Anti-TRPC3 with the peptide antigen


GTX54860 WB Image

WB analysis of rat heart membrane lysate using GTX54860 TRPC3 antibody preincubated with or without immunogen peptide.

Dilution : 1:200


GTX54860 IHC-P Image

IHC-P analysis of rat pituitary gland tissue using GTX54860 TRPC3 antibody. TRPC3 is mainly expressed in the adenohypophysis (on left). Hematoxylin is used as the counterstain.

Dilution : 1:100



For full product information, images and publications, please visit our [website](https://www.genetex.com).