

# TRPM8 antibody

**Cat. No. GTX54866**

<b>Host</b>	Rabbit
<b>Clonality</b>	Polyclonal
<b>Isotype</b>	IgG
<b>Application</b>	WB, ICC/IF, IHC-P, IHC-Fr, IP, Neutralizing/Inhibition, LCI
<b>Reactivity</b>	Human, Mouse, Rat

Reference ( 2 )  
Package  
50 µl

## APPLICATION

### Application Note

\*Optimal dilutions/concentrations should be determined by the researcher.

Suggested dilution	Recommended dilution
WB	Assay dependent
ICC/IF	Assay dependent
IHC-P	Assay dependent
IHC-Fr	Assay dependent
IP	Assay dependent
Neutralizing/Inhibition	Assay dependent
LCI	Assay dependent

Not tested in other applications.

**Calculated MW** 128 kDa. ( [Note](#) )

**Product Note** Knockdown/Knockout validation was supported by references (PMID: 35525986)

## PROPERTIES

<b>Form</b>	Liquid
<b>Buffer</b>	PBS, 1% BSA
<b>Preservative</b>	0.05% Sodium azide
<b>Storage</b>	Store as concentrated solution. Centrifuge briefly prior to opening vial. For short-term storage (1-2 weeks), store at 4°C. For long-term storage, aliquot and store at -20°C or below. Avoid multiple freeze-thaw cycles.
<b>Concentration</b>	0.8 mg/ml (Please refer to the vial label for the specific concentration.)
<b>Immunogen</b>	Peptide SDVDGTTYDFAHC, corresponding to amino acid residues 917-929 (3rd extracellular loop) of human TRPM8 (Accession : Q7Z2W7).
<b>Purification</b>	Purified by antigen-affinity chromatography



For full product information, images and publications, please visit our [website](#).

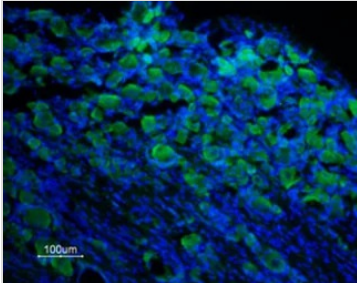
**Conjugation**

Unconjugated

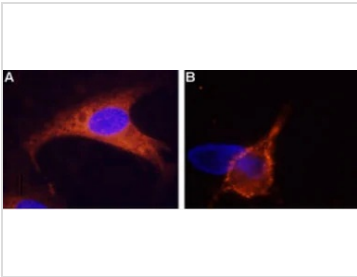
**Note**

Knockdown/Knockout validation was supported by references (PMID: 35525986).

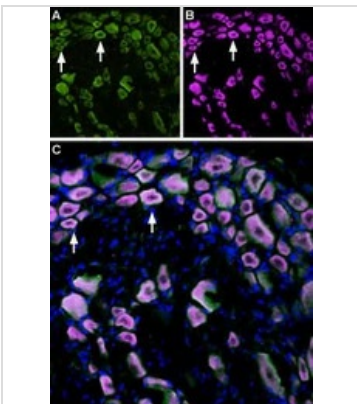
## DATA IMAGES


**GTX54866 IHC-Fr Image**

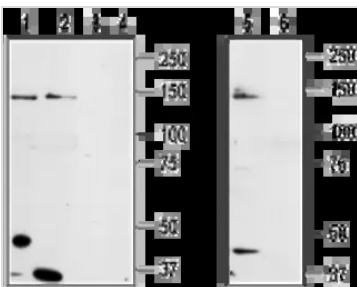
IHC-Fr analysis of rat DRG tissue using GTX54866 TRPM8 antibody. TRPM8 is expressed in DRG neurons. Hoechst 33342 is used as the counterstain.  
Dilution : 1:100


**GTX54866 ICC/IF LCI Image**

ICC/IF(Panel A) and Live cell imaging(Panel B) analysis of rat dorsal root ganglion (DRG) cells using GTX54866 TRPM8 antibody.  
Blue : Hoechst 33342 for nuclear staining  
Dilution : 1:500 for Panel A ; 1:50 for Panel B


**GTX54866 IHC-Fr Image**

IHC-Fr analysis of rat DRG tissue using GTX54866 TRPM8 antibody. Cell nuclei were stained with DAPI (blue).  
Panel A : TRPM8 labeling (green).  
Panel B : The same section was then labeled for TrkA (purple).  
Panel C : Merge of A and B demonstrates co-localization of TRPM8 and TrkA in rat DRG (arrows).  
Dilution : 1:300


**GTX54866 WB Image**

WB analysis of DU145 (lanes 1, 3), LNCaP (lanes 2, 4), and mouse-TRPM8 transfected HEK-293 (lanes 5, 6) cell lysates using GTX54866 TRPM8 antibody preincubated with or without immunogen peptide.  
Dilution : 1:200



For full product information, images and publications, please visit our [website](#).