

TRPV6 antibody

Cat. No. GTX54869

Host	Rabbit
Clonality	Polyclonal
Isotype	IgG
Applications	WB, ICC/IF, IHC-P, IHC-Fr, IP
Reactivity	Human, Mouse, Rat

References (1)

★★★★★ Review (2)

Package

50 µl

Applications

Application Note

*Optimal dilutions/concentrations should be determined by the researcher.

Suggested dilution	Recommended dilution
WB	Assay dependent
ICC/IF	Assay dependent
IHC-P	Assay dependent
IHC-Fr	Assay dependent
IP	Assay dependent

Not tested in other applications.

Calculated MW 87 kDa. ([Note](#))

Properties

Form	Liquid
Buffer	PBS, 1% BSA
Preservative	0.05% Sodium azide
Storage	Store as concentrated solution. Centrifuge briefly prior to opening vial. For short-term storage (1-2 weeks), store at 4°C. For long-term storage, aliquot and store at -20°C or below. Avoid multiple freeze-thaw cycles.
Concentration	0.75 mg/ml (Please refer to the vial label for the specific concentration.)
Immunogen	Peptide (C)NRGLEDGESWEYQI, corresponding to amino acid residues 712-725 (Intracellular, C-terminus) of human TRPV6 (Accession : Q9H1D0).
Purification	Purified by antigen-affinity chromatography
Conjugation	Unconjugated

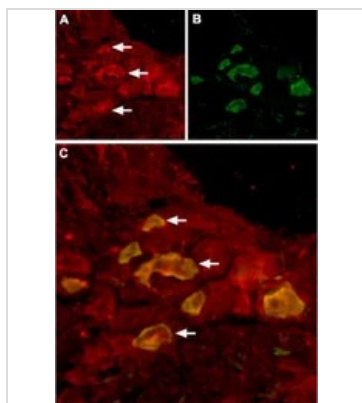
For full product information, images and publications, please visit our [website](#).

For laboratory research use only. Not for any clinical, therapeutic, or diagnostic use in humans or animals. Not for animal or human consumption.

Note

Purchasers shall not, and agree not to enable third parties to, analyze, copy, reverse engineer or otherwise attempt to determine the structure or sequence of the product.

DATA IMAGES



GTX54869 IHC-Fr Image

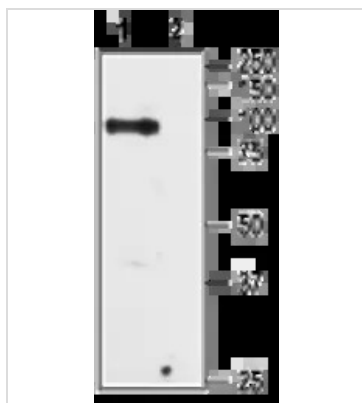
IHC-Fr analysis of rat DRG tissue using GTX54869 TRPV6 antibody.

Panel A : TRPV6 channel (red) in DRG neurons.

Panel B : Staining with mouse anti-Parvalbumin (green) in the same DRG section.

Panel C : Merge of TRPV6 and Parvalbumin demonstrates colocalization (arrows).

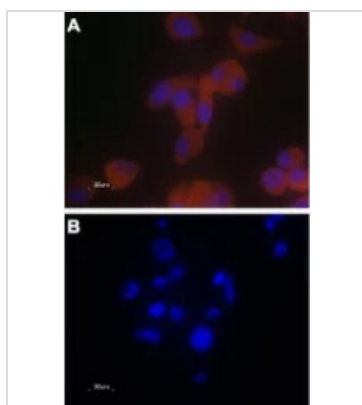
Dilution : 1:100



GTX54869 WB Image

WB analysis of PC-3 cell lysate using GTX54869 TRPV6 antibody preincubated with or without immunogen peptide.

Dilution : 1:200



GTX54869 ICC/IF Image

ICC/IF analysis of PFA-fixed PC-3 cells using GTX54869 TRPV6 antibody.

Panel A : Primary antibody

Panel B : Primary antibody prior incubated with immunogen peptide

Dilution : 1:20



For full product information, images and publications, please visit our [website](https://www.genetex.com).