

VGluT1 antibody

Cat. No. GTX54870

Host	Rabbit
Clonality	Polyclonal
Isotype	IgG
Applications	WB, IHC-Fr
Reactivity	Human, Mouse, Rat

Package

50 µl

Applications

Application Note

*Optimal dilutions/concentrations should be determined by the researcher.

Suggested dilution	Recommended dilution
WB	Assay dependent
IHC-Fr	Assay dependent

Not tested in other applications.

Calculated MW 62 kDa. ([Note](#))

Properties

Form	Liquid
Buffer	PBS, 1% BSA
Preservative	0.05% Sodium azide
Storage	Store as concentrated solution. Centrifuge briefly prior to opening vial. For short-term storage (1-2 weeks), store at 4°C. For long-term storage, aliquot and store at -20°C or below. Avoid multiple freeze-thaw cycles.
Concentration	0.8 mg/ml (Please refer to the vial label for the specific concentration.)
Immunogen	Peptide (C)EFRQEEFRKLAGR, corresponding to amino acid residues 2-14 (Cytoplasmic, N-terminus) of rat VGLUT1 (Accession : Q62634).
Purification	Purified by antigen-affinity chromatography
Conjugation	Unconjugated

Note

For laboratory research use only. Not for any clinical, therapeutic, or diagnostic use in humans or animals. Not for animal or human consumption.

Purchasers shall not, and agree not to enable third parties to, analyze, copy, reverse engineer or otherwise attempt to determine the structure or sequence of the product.



For full product information, images and publications, please visit our [website](#).

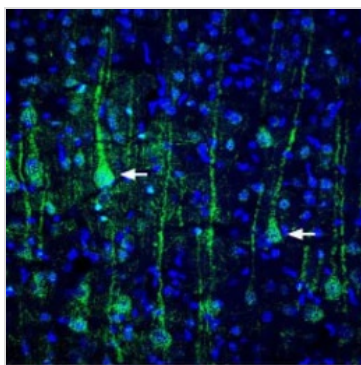
DATA IMAGES



GTx54870 WB Image

WB analysis of rat cortex (lanes 1 and 3) and mouse brain (lanes 2 and 4) lysates using GTx54870 VGLUT1 antibody preincubated with or without immunogen peptide.

Dilution : 1:200



GTx54870 IHC-Fr Image

IHC-Fr analysis of rat cortex tissue using GTx54870 VGLUT1 antibody. VGLUT1 (green) appears in neurons of the pyramidal layer of the parietal cortex (arrows). DAPI is used as the nuclear counterstain (blue).

Dilution : 1:400



For full product information, images and publications, please visit our [website](https://www.genetex.com).