

## VGLUT2 antibody

Cat. No. GTX54871

|              |                                 |
|--------------|---------------------------------|
| Host         | Rabbit                          |
| Clonality    | Polyclonal                      |
| Isotype      | IgG                             |
| Applications | WB, IHC-Fr, IHC (Free Floating) |
| Reactivity   | Human, Mouse, Rat, Monkey       |

References ( 1 )

Package

50 µl

## Applications

## Application Note

\*Optimal dilutions/concentrations should be determined by the researcher.

| Suggested dilution  | Recommended dilution |
|---------------------|----------------------|
| WB                  | Assay dependent      |
| IHC-Fr              | Assay dependent      |
| IHC (Free Floating) | Assay dependent      |

Not tested in other applications.

Calculated MW 65 kDa. ( [Note](#) )

## Properties

|               |  |
|---------------|--|
| Form          | Liquid   |
| Buffer        | PBS, 1% BSA  |
| Preservative  | 0.05% Sodium azide   |
| Storage       | Store as concentrated solution. Centrifuge briefly prior to opening vial. For short-term storage (1-2 weeks), store at 4°C. For long-term storage, aliquot and store at -20°C or below. Avoid multiple freeze-thaw cycles. |
| Concentration | 0.8 mg/ml (Please refer to the vial label for the specific concentration.)   |
| Immunogen     | Peptide (C)EDGKPLEVPEKK, corresponding to amino acid residues 45-56 (Cytoplasmic, N-terminus) of rat VGLUT2 (Accession : Q9JI12).  |
| Purification  | Purified by antigen-affinity chromatography  |
| Conjugation   | Unconjugated   |

## Note

For laboratory research use only. Not for any clinical, therapeutic, or diagnostic use in humans or animals. Not for animal or human consumption.

Purchasers shall not, and agree not to enable third parties to, analyze, copy, reverse engineer or otherwise attempt to determine the structure or sequence of the product.



For full product information, images and publications, please visit our [website](#).

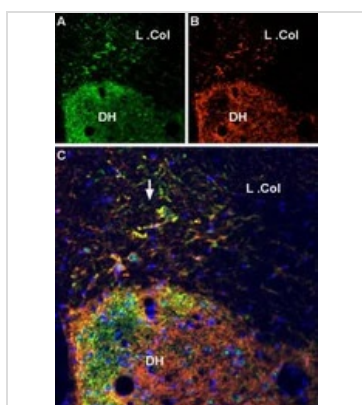
## DATA IMAGES



### GTX54871 WB Image

WB analysis of rat (lanes 1 and 4), mouse brain membrane (lanes 2 and 5), and SH-SY5Y cell (lanes 3 and 6) lysates using GTX54871 VGLUT2 antibody preincubated with or without immunogen peptide.

Dilution : 1:400



### GTX54871 IHC-Fr Image

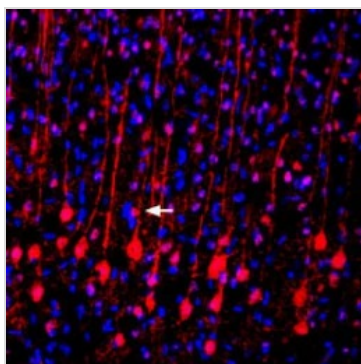
IHC-Fr analysis of rat spinal cord tissue using GTX54871 VGLUT2 antibody. Cell nuclei were stained with DAPI (blue).

Panel A : Vesicular glutamate transporter 2 labeling (green).

Panel B : The same section labeled for P2X7 receptor (orange).

Panel C : Merge of A and B demonstrates partial co-localization of VGLUT2 and P2X7 receptor in dorsal horn and in lateral column (L. Col., arrow).

Dilution : 1:100



### GTX54871 IHC-Fr Image

IHC-Fr analysis of rat neocortex tissue using GTX54871 VGLUT2 antibody. VGLUT2 (red) is detected in pyramidal neurons (arrow). The same section was stained with DAPI (blue).

Dilution : 1:400



For full product information, images and publications, please visit our [website](https://www.genetex.com).