

## Maxi Potassium channel alpha antibody

Cat. No. GTX54874

Host	Rabbit
Clonality	Polyclonal
Isotype	IgG
Applications	WB, ICC/IF, IHC-P, IHC-Fr, IP
Reactivity	Human, Mouse, Rat, Guinea pig, Pig

References ( 3 )

Package

50 µl

## Applications

## Application Note

\*Optimal dilutions/concentrations should be determined by the researcher.

Suggested dilution	Recommended dilution
WB	Assay dependent
ICC/IF	Assay dependent
IHC-P	Assay dependent
IHC-Fr	Assay dependent
IP	Assay dependent

Not tested in other applications.

Calculated MW 134 kDa. ( [Note](#) )

## Properties

Form	Liquid
Buffer	PBS, 1% BSA
Preservative	0.05% Sodium azide
Storage	Store as concentrated solution. Centrifuge briefly prior to opening vial. For short-term storage (1-2 weeks), store at 4°C. For long-term storage, aliquot and store at -20°C or below. Avoid multiple freeze-thaw cycles.
Concentration	0.6 mg/ml (Please refer to the vial label for the specific concentration.)
Immunogen	Peptide (C)STANRPNRPKSRESRDK, corresponding to amino acid residues 1184-1200 (Intracellular, C-terminal part) of mouse KCNA1 (Accession number Q08460).
Purification	Purified by antigen-affinity chromatography
Conjugation	Unconjugated

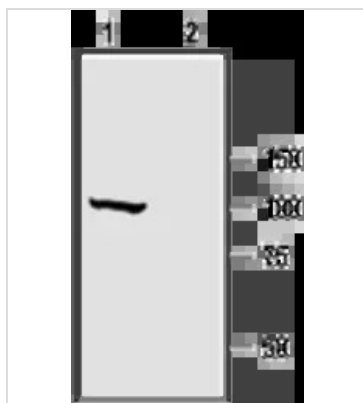
For full product information, images and publications, please visit our [website](#).

For laboratory research use only. Not for any clinical, therapeutic, or diagnostic use in humans or animals. Not for animal or human consumption.

## Note

Purchasers shall not, and agree not to enable third parties to, analyze, copy, reverse engineer or otherwise attempt to determine the structure or sequence of the product.

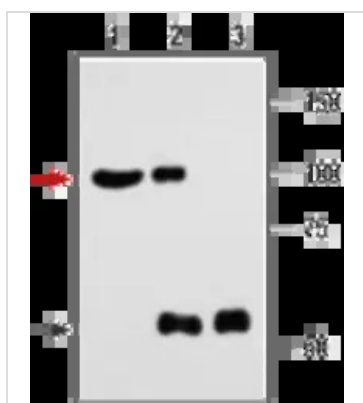
## DATA IMAGES



### GTX54874 WB Image

WB analysis of rat brain membrane lysate using GTX54874 Maxi Potassium channel alpha antibody preincubated with or without immunogen peptide.

Dilution : 1:500



### GTX54874 IP Image

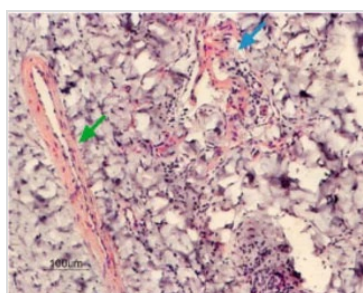
IP analysis of rat brain tissue lysate using GTX54874 Maxi Potassium channel alpha antibody. The upper arrow indicates KCNMA1 channel while the lower arrow indicates the IgG heavy chain. WB was performed with the GTX54874 antibody.

IP reaction : 4 µg

Lane 1 : Brain lysate

Lane 2 : Brain lysate immunoprecipitated with Anti-KCNMA1 (KCa1.1)Antibody

Lane 3 : Brain lysate immunoprecipitated with pre-immune rabbit serum



### GTX54874 IHC-P Image

IHC-P analysis of rat penis tissue using GTX54874 Maxi Potassium channel alpha antibody. Strong and specific immunostaining is evident in both corpus cavernosum smooth muscle cells (blue arrow) and in the muscular layer of the penis artery (green arrow). Hematoxylin is used as the counterstain.



For full product information, images and publications, please visit our [website](https://www.genetex.com).