

Kv1.1 antibody

Cat. No. GTX54875

| | |
|---------------------|----------------------|
| Host | Rabbit |
| Clonality | Polyclonal |
| Isotype | IgG |
| Applications | WB, ICC/IF, FCM, LCI |
| Reactivity | Human, Mouse, Rat |

Package

50 µl

Applications

Application Note

*Optimal dilutions/concentrations should be determined by the researcher.

| Suggested dilution | Recommended dilution |
|--------------------|----------------------|
| WB | Assay dependent |
| ICC/IF | Assay dependent |
| FCM | Assay dependent |
| LCI | Assay dependent |

Not tested in other applications.

Calculated MW 56 kDa. ([Note](#))

Properties

| | |
|----------------------|--|
| Form | Liquid |
| Buffer | PBS, 1% BSA |
| Preservative | 0.05% Sodium azide |
| Storage | Store as concentrated solution. Centrifuge briefly prior to opening vial. For short-term storage (1-2 weeks), store at 4°C. For long-term storage, aliquot and store at -20°C or below. Avoid multiple freeze-thaw cycles. |
| Concentration | 0.8 mg/ml (Please refer to the vial label for the specific concentration.) |
| Immunogen | Peptide (C)KDDKDFTGTIHRID, corresponding to amino acid residues 193-206 (1st extracellular loop) of rat KV1.1 (Accession : P10499). |
| Purification | Purified by antigen-affinity chromatography |
| Conjugation | Unconjugated |



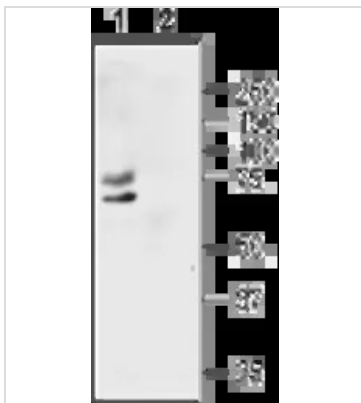
For full product information, images and publications, please visit our [website](#).

For laboratory research use only. Not for any clinical, therapeutic, or diagnostic use in humans or animals. Not for animal or human consumption.

Note

Purchasers shall not, and agree not to enable third parties to, analyze, copy, reverse engineer or otherwise attempt to determine the structure or sequence of the product.

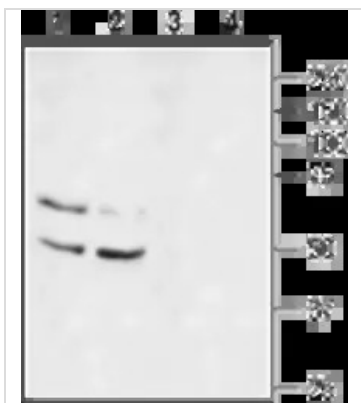
DATA IMAGES



GTX54875 WB Image

WB analysis of MCF-7 cell lysate using GTX54875 Kv1.1 antibody preincubated with or without immunogen peptide.

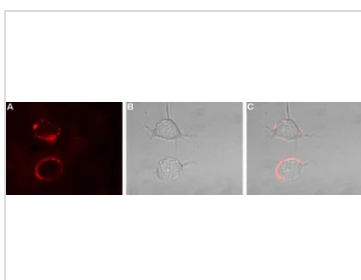
Dilution : 1:200



GTX54875 WB Image

WB analysis of rat brain lysate (lanes 1 and 3) and mouse brain lysate (lanes 2 and 4) using GTX54875 Kv1.1 antibody preincubated with or without immunogen peptide.

Dilution : 1:200



GTX54875 LCI Image

Live cell imaging analysis of live intact PC12 cells using GTX54875 Kv1.1 antibody.

Panel A : Primary antibody (Red)

Panel B : Live view of the cell

Panel C : Merged images of Panel A and B

Dilution : 1:50



For full product information, images and publications, please visit our [website](https://www.genetex.com).