

## ABCB10 antibody

Cat. No. GTX54895

|              |                   |
|--------------|-------------------|
| Host         | Rabbit            |
| Clonality    | Polyclonal        |
| Isotype      | IgG               |
| Applications | WB, ICC/IF, IHC-P |
| Reactivity   | Human, Mouse, Rat |

Package  
100 µl

## Applications

## Application Note

\*Optimal dilutions/concentrations should be determined by the researcher.

| Suggested dilution | Recommended dilution |
|--------------------|----------------------|
| WB                 | 1:500 - 1:1000       |
| ICC/IF             | 1:100 - 1:500        |
| IHC-P              | 1:100 - 1:200        |

Not tested in other applications.

Calculated MW 79 kDa. ( [Note](#) )

## Properties

|               |  |
|---------------|--|
| Form          | Liquid   |
| Buffer        | 0.42% Potassium Phosphate, 0.87% NaCl, 30% Glycerol  |
| Preservative  | 0.01% Sodium azide   |
| Storage       | Store as concentrated solution. Centrifuge briefly prior to opening vial. For short-term storage (1-2 weeks), store at 4°C. For long-term storage, aliquot and store at -20°C or below. Avoid multiple freeze-thaw cycles. |
| Concentration | Batch dependent (Please refer to the vial label for the specific concentration.)   |
| Immunogen     | KLH-conjugated synthetic peptide encompassing a sequence within the center region of ABCB10. The exact sequence is proprietary.  |
| Purification  | Purified by antigen-affinity chromatography  |
| Conjugation   | Unconjugated   |

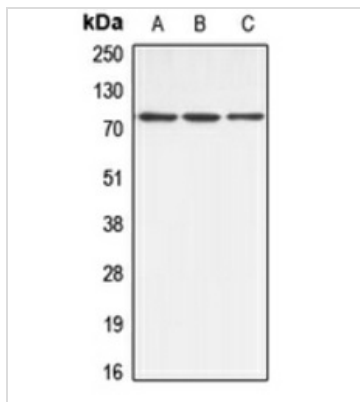
## Note

For laboratory research use only. Not for any clinical, therapeutic, or diagnostic use in humans or animals. Not for animal or human consumption.

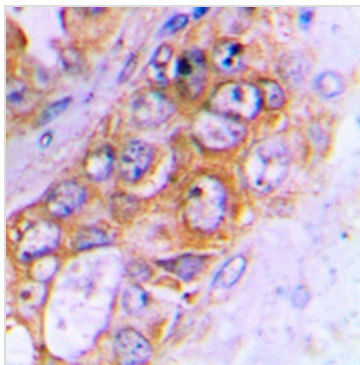
Purchasers shall not, and agree not to enable third parties to, analyze, copy, reverse engineer or otherwise attempt to determine the structure or sequence of the product.



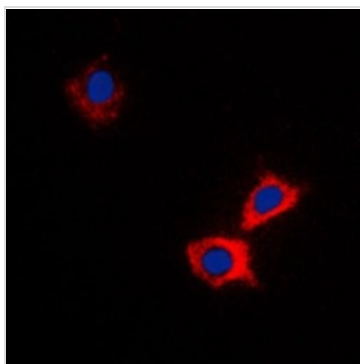
For full product information, images and publications, please visit our [website](#).

**DATA IMAGES**

**GTx54895 WB Image**

WB analysis of HeLa (A), mouse kidney (B), rat kidney (C) whole cell lysates using GTx54895 ABCB10 antibody.


**GTx54895 IHC-P Image**

IHC-P analysis of formalin fixed human lung cancer tissue section using GTx54895 ABCB10 antibody.  
Antigen retrieval : Heat mediated antigen retrieval with sodium citrate buffer (pH 6.0)


**GTx54895 ICC/IF Image**

ICC/IF analysis of formalin-fixed HeLa cells using GTx54895 ABCB10 antibody.

Red : Primary antibody

Blue : DAPI

Permeabilization : 0.1% Triton X-100 in TBS for 5-10 minutes



For full product information, images and publications, please visit our [website](https://www.genetex.com).